

# Palm Handheld/SmartPhone

## Audible Player User Guide



### Connecting Palm handhelds to Audible Manager

To enable communication between your Palm handheld and AudibleManager, please follow the steps outlined below:

1. If you don't already have AudiblePlayer installed on your PalmOne Handheld device, please install the appropriate version of AudiblePlayer from the Software page.
  - Go to <http://www.audible.com/software>
  - Scroll down the listings until you find the listing for Audible Player.
  - Click on the Download for Windows/Mac link depending on your computer.
- Choose the correct version of the AudiblePlayer for your type of Palm device and install the program.

## AudiblePlayer® for Handhelds

### MICROSOFT WINDOWS MOBILE DEVICES



AudiblePlayer lets you listen to Audible audio on your Windows Mobile Pocket PC or Smartphone. Download this file if you already have AudibleManager installed on your computer, but do not have AudiblePlayer installed on your Windows Mobile device.

▶ [Download](#)

### PALM OS HANDHELDS



AudiblePlayer lets you listen to Audible audio on your Palm OS handheld. Download this file if you already have AudibleManager or iTunes installed on your computer, but do not have AudiblePlayer installed on your Palm OS PDA.

▶ [Download for Windows](#)

▶ [Download for Mac](#)

### SYMBIAN SERIES 60 PHONES

**symbian** AudiblePlayer lets you listen to Audible audio on your Symbian Series 60 phone. Download this file if you already have AudibleManager installed on your computer, but do not have AudiblePlayer installed on your Symbian Series 60 phone

▶ [Download](#)

**AudiblePlayer Software** → **PC's**

**PALM OS**

<input type="radio"/> Palm OS 5 devices (Zire31, Zire71, Zire72, Tungsten C, E & T series, LifeDrive)	<input type="radio"/> Sony CLIE OS 5 Devices (UX40/50, TJ-35, TJ-37, TH-55, NX60, NX70, NX73, NX80, NZ90, TG50)
<input type="radio"/> Tapwave Zodiac	<input type="radio"/> Sony CLIE OS 4 Devices (SJ-30, SJ-33, T615c, T665)
<input type="radio"/> Treo 600 & 650	

**Select**

Or

**AudiblePlayer Software** → **MAC's**

**PALM OS**

<input type="radio"/> Palm OS 5 devices (Zire31, Zire71, Zire72, Tungsten C, E & T series, LifeDrive)	<input type="radio"/> Sony CLIE OS 5 Devices (UX40/50, TJ-35, TJ-37, TH-55, NX60, NX70, NX73, NX80, NZ90, TG50)
<input type="radio"/> Treo 600 & 650	

**Select**

- Install and run the AudiblePlayer program by following the proper prompts for this process.

**Direct Communication** should automatically launch and you will be able to transfer and manage your Audible content on your Handheld.



If Direct Communication does not launch, go to the "App" menu and choose "Enable Communication."

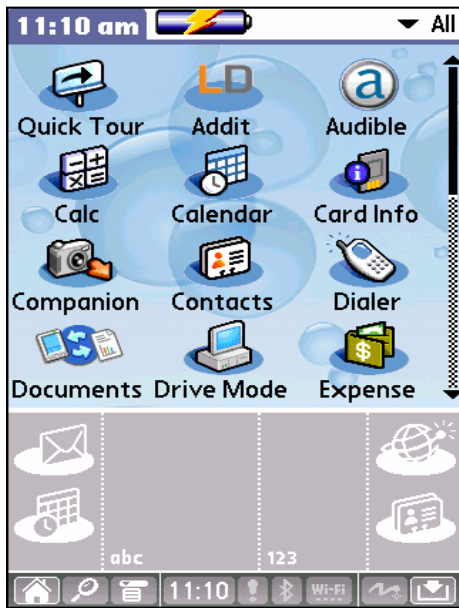


**Note for Clie Users:** Make sure you disable the HotSync program before running the AudiblePlayer. If you do not, Audible Manager will not read the device properly

## Accessing Audible Audio on your Treo

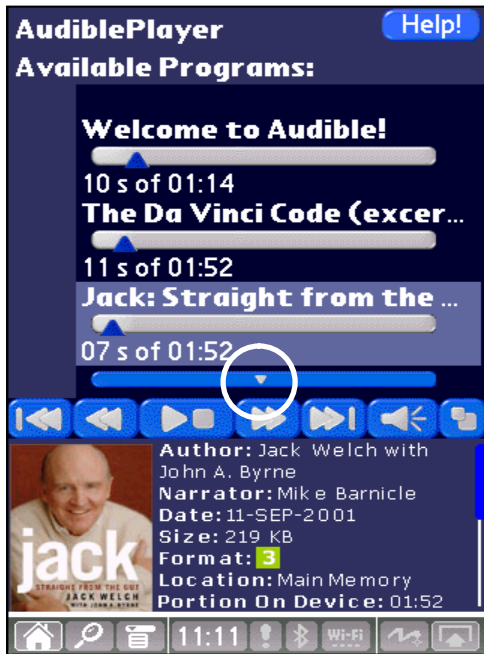
Congratulations on downloading and installing AudiblePlayer. We have taken the very best in audio entertainment and made it possible for you to listen to your audio books and programs right from your Palm based PDA.

---



### Launching AudiblePlayer

Finding programs on a Palm is similar to finding programs on a Windows PC or a MAC. You can launch AudiblePlayer from the Programs Menu on your device.



### Choosing an Audio File

Each Time AudiblePlayer is launched you will be presented with a list of audio titles available on your Handheld.

Displayed in the lower portion of the screen is detailed information for each title.

Additional books on your handheld can be located by clicking on the drop-down arrow.

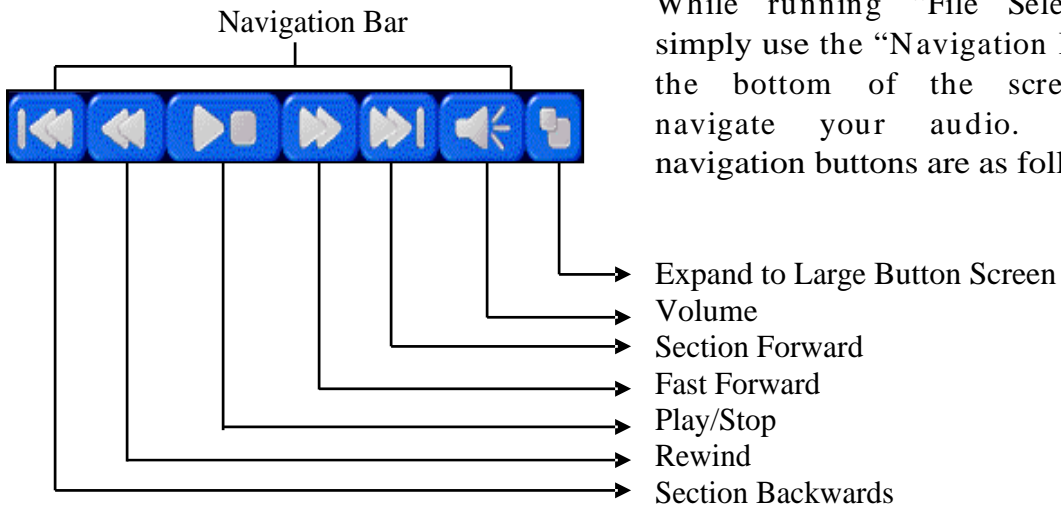


### Selecting File to Play

Click on the audio title you wish to hear in order to begin playback. A “speaker” icon will appear to the right of the audio playing and the “Play/ Pause” button will be highlighted.

Controlling Playback

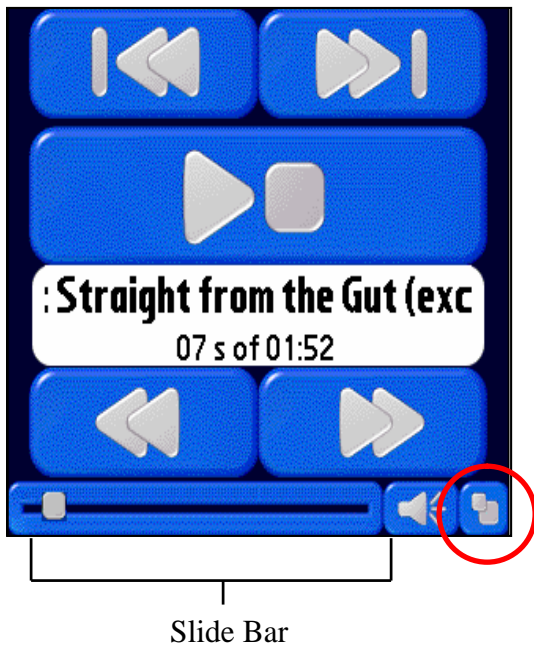
While running “File Selection”, simply use the “Navigation Bar” at the bottom of the screen to navigate your audio. The navigation buttons are as follows:

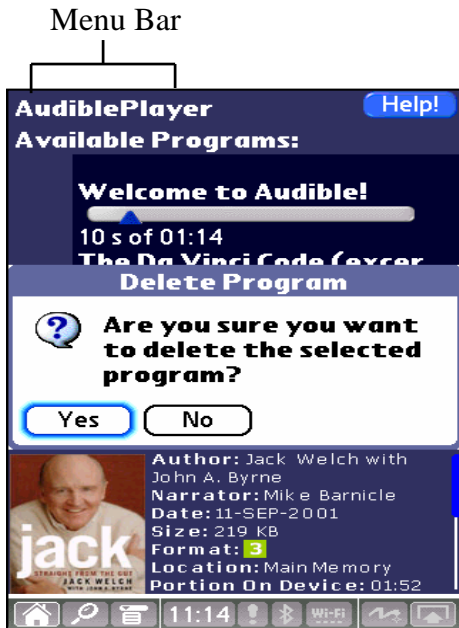


Large Button Screen

When using the “Large Button” display for playback navigation, “Slide Bar” to fast forward or rewind.

Note: Reselecting the “Expand button” again will launch the regular navigation bar.





### Deleting Programs

To delete programs manually from your handheld device, tap the “Menu Bar” within AudiblePlayer with your stylus and select “Delete Audio Program”.

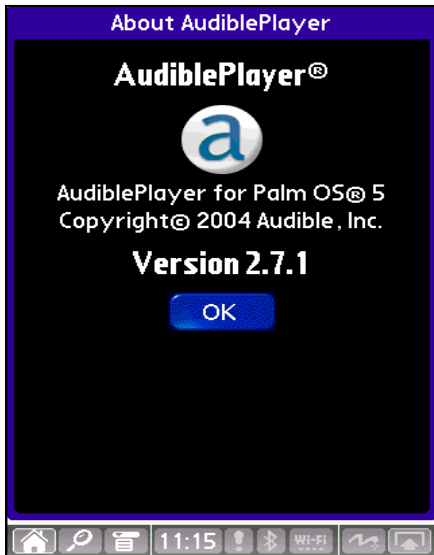


### Background Playback

By clicking on the “Menu Bar” and selecting “Options” you can enable or disable the “Background Playback” option under “Preferences”.

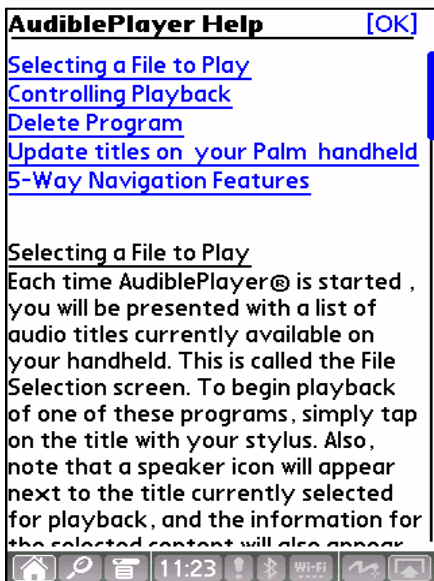


“Background Playback” allows audio books to continue playing while you access other applications on the handheld device.



### Version of Software

To view the version of AudiblePlayer, select “About AudiblePlayer” from the “Options” menu under the “Menu Bar”.

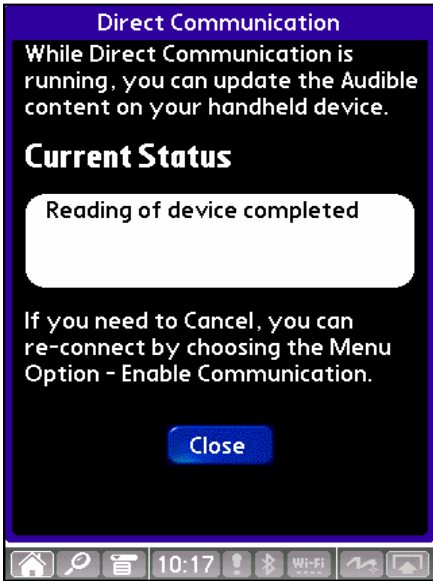


### Help

When selecting “View” under the “Menu Bar” you can access additional information by selecting the “Help” option.

You will be able to learn about using: Selecting Audio, controlling Playback, Updating Audio, and Navigation Controls.





### Transferring Programs

Connect the unit to your computer through a USB/ Cradle connection. Launch the AudiblePlayer software on your handheld device. Launch Audible Manager if on a Windows based PC or iTunes on a MAC. With both the AudiblePlayer software and the computers audio software running “Direct Communication” should be established. Use the transfer functions of Audible Manager or iTunes to update your devices content.



### Enable Communication

Should Audible Manager or iTunes already be running, you can establish “Direct Communication” by clicking on the “Menu Bar” and selecting the menu option “Enable Communication”.

### Storage Cards:

For long audio programs, you can place audio on a storage card using AudibleManager or iTunes. The AudiblePlayer will present a consolidated list of your Audio programs – whether it is stored on your storage card or the main memory of the device.



### 5-Way Navigation

5-Way Navigation allows you to use the built-in navigation buttons on your device.

While the device is in “Playback”

- Pressing the Up/Down buttons repeatedly controls the volume.
- Left/Right buttons will control Fast Forward and Rewind.
- Select Button will start and stop the audio playback.

While the device is not in “Playback”

- Up/Down selects a title from the “Available Programs” list.
  - Left/ Right buttons will control Fast Forward or Rewind through the content while not in “Playback” mode.
  - Select button will start the “Playback” of selected audio.
-



### Sections:

Some programs are broken into “Sections”. Sections are similar to chapters in a book. Sometimes, audio programs are divided into sections by individual publishing houses to allow convenient navigation. You can tell if the current audio program has sections if there is a “Sec” to the right of the running time. To navigate through the sections in an audio program you may either tap on the “Previous Section” or “Next Section” buttons.

For further assistance you may access our Help within AudibleManager or visit our Help Center at [www.audible.com/helpcenter](http://www.audible.com/helpcenter).



This document was created with Win2PDF available at <http://www.win2pdf.com>.  
The unregistered version of Win2PDF is for evaluation or non-commercial use only.  
This page will not be added after purchasing Win2PDF.