



Copyright © 2003 Paragon Software (Smart Handheld Devices Division)  
Dolgoprudny, Moscow region, Russia

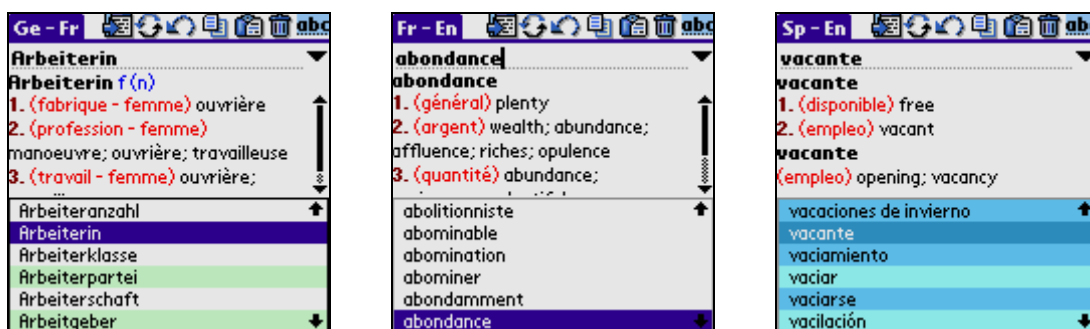
## ***Multi-language dictionary “SlovoEd”***

### **Table of contents**

General Information.....	2
Registration and demo version limitations.....	3
Installation .....	4
Installation in main device memory .....	4
Installation to expansion card.....	5
How to use “SlovoEd” .....	6
Interface elements .....	7
Dictionary menu.....	8
How to add new word entries and edit existing word entries.....	9
How to learn new words using “SlovoEd” .....	11
Options .....	11
Common Options.....	12
View Options .....	12
Resident Options.....	13
Word of the Day Options.....	13
Installation to expansion card.....	14
Placing dictionaries on expansion card .....	14
Placing the whole program on the expansion card .....	14
Using the resident module .....	15
Uninstallation.....	16
Customer support service.....	16
How to buy “SlovoEd” dictionaries for Palm OS.....	17

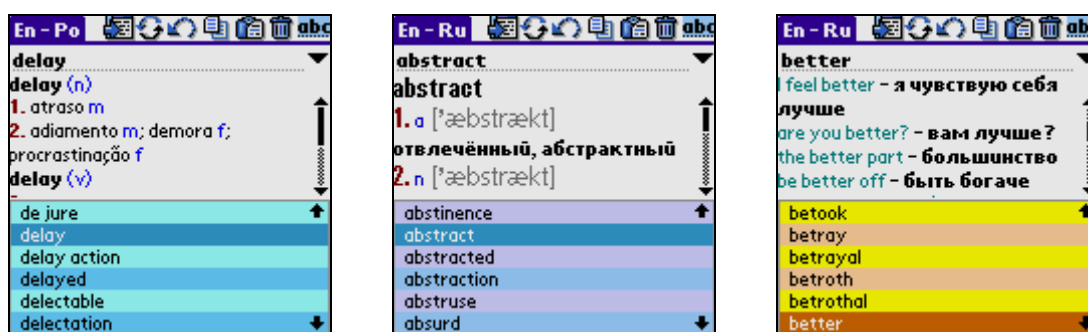
## General Information

“SlovoEd” is a multi-language dictionary for devices with Palm OS (version 3.1 and higher)<sup>1</sup>.

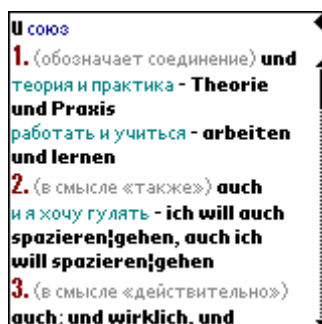


Advantages of the program are:

- Great number of word entries
- Low memory consumption
- The ability to install several language pairs
- Convenient interface with color support and several color schemes



- Color formatting of word entries



- The ability to change existing entries using the powerful built-in editor
- The ability to add new word entries
- Search history (the list of the latest 10 words that you searched for). You can see any word from the history again at any time

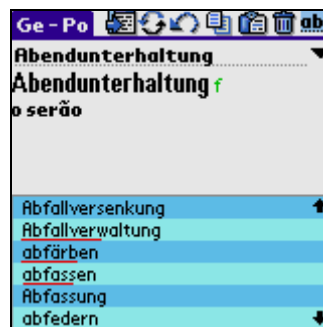
<sup>1</sup> On devices with Palm OS 3.5 and higher you can use all the capabilities of SlovoEd. On devices with Palm OS 3.1 and 3.3 some options are unavailable (for example, **Use Clipboard to get text** in resident module). Not all devices with Palm OS version earlier than 3.5 support gray scales (gray scales are used for formatting word entries). In addition, the resident module is not implemented on the TREO 180 and TREO 270 devices.

- Transcription support (only in the “MultiLex” dictionaries)
- Full screen mode to show translation
- The ability to install “SlovoEd” to expansion cards (Memory Stick, Compact Flash, Secure Digital, MMC)
- Support for dictionary languages, which belong to different code pages (for example, Russian-German dictionary)
- Resident module that allows you to translate words without exiting a current application.
- The ability to save certain words on Flash Cards (a special method of learning new foreign words) and then quiz yourself from the Flash Cards.

High data compression ratio with a high access rate is available due to a special technology developed by Paragon Software (SHDD) (<http://www.penreader.com>).

Information about all the dictionaries we develop is available at <http://www.palm-dictionaries.com>

“SlovoEd” supports correct sorting order for each national language according to its alphabet. For example, some languages (Czech, Slovak, Hungarian and so on) have special characters and combinations of letters like **a, ä, c, č, h, ch, l, l'**, which are considered as one letter. Dictionary entries are listed in the correct alphabetical order for that language.



## Registration and demo version limitations

The more you use an unregistered dictionary, the more you see a message about its registration procedure. To register your copy of the dictionary, enter your serial number in the following dialog box:



Each installed dictionary should be registered with its own serial number.

The information on how to buy “SlovoEd” and how to get the serial number is available on our web site <http://www.palm-dictionaries.com/SlovoEd/buy.html>.

## Installation

### NOTE:

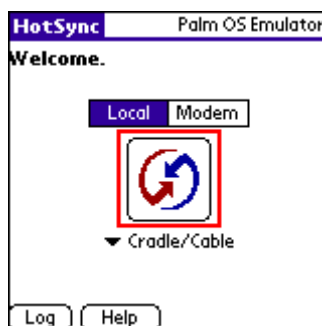
1. If you want to use a dictionary for a language (your native language), which is not supported by standard Palm OS (for example, Russian, Greek or Turkish), you have to install the PiLoc language support system (which allows you to see native symbols on your Palm). This way you will be able to type words in your native language, and “SlovoEd” will display translations with specific native symbols properly. If you don’t install native language support system, you will see unreadable symbols (gibberish)<sup>2</sup>.
2. We recommend that you use our localization system PiLoc. You can find more detailed information about PiLoc at our web site: <http://www.penreader.com/PalmOS/PiLoc.html>. Demo versions of PiLoc are available at <http://piloc.penreader.com/cgi-bin/piloc.cgi>.
3. Some of the dictionaries we develop, for example, Russian-German and Russian-French dictionaries, don’t work without PiLoc (version 2.20 and higher) at all, as they use API of PiLoc. In the following instructions we assume that you are using PiLoc 2.20 or higher.

### Installation in main device memory

1. If you have an old version of “SlovoEd” installed you should remove it first. You can read about the uninstallation procedure in the appropriate documentation to the installed version. Otherwise use the uninstallation procedure described in this document.
2. Run the Palm Desktop program on your desktop computer (the Palm Desktop icon is on the desktop). Then click the Install Tool icon in the Palm Desktop window.



3. In the Install toll window add the following files:
  - **Dictionary engine.** The dictionary engine exists in several languages – in English and in languages of the dictionary. For example, in the Russian-German dictionary package there will be three engine files - SlovoEdRus.prc (the engine with the Russian interface), SlovoEdGerm.prc (the engine with the German interface), SlovoEd.prc (the engine with the English interface). You should choose only one of these files and add it into the Install Tool window. To add a file into the Install Tool window you should drag-&-drop the file there or press the Add button and set the location of the file you want to add.
  - **Dictionary files** (two files for the bi-directional dictionary and one file for the uni-directional dictionary). For example, for the bi-directional English–French dictionary you should install **French\_English.prc** and **English\_French.prc**, for the uni-directional German-Spanish dictionary - only **German\_Spanish.prc**. To add a file into the Install Tool window you should drag-&-drop the file there or press the Add button and set the location of the file you want to add.
4. Press the Done button.
5. Synchronize your device with the desktop computer using the HotSync program. For synchronization open the application HotSync and tap the icon in the center of the screen.



<sup>2</sup> You don’t need to install national localization system if you use English, German, Hungarian, French, Spanish, Italian and Dutch languages.

After synchronization “SlovoEd” will be installed and its icon will appear on the Applications screen.

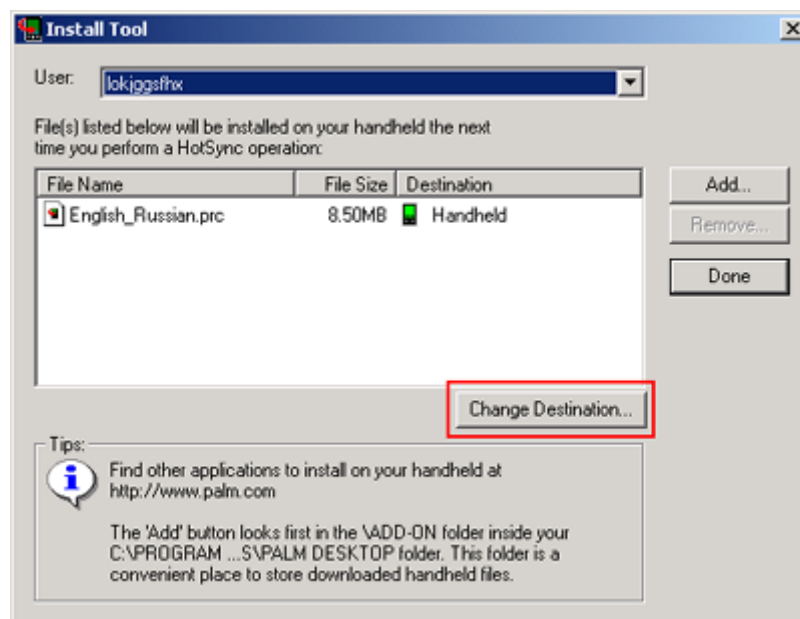


## Installation to expansion card

Please read first the description of the files needed to install the dictionary (item 3, section **Installation in main device memory**) before reading this section.

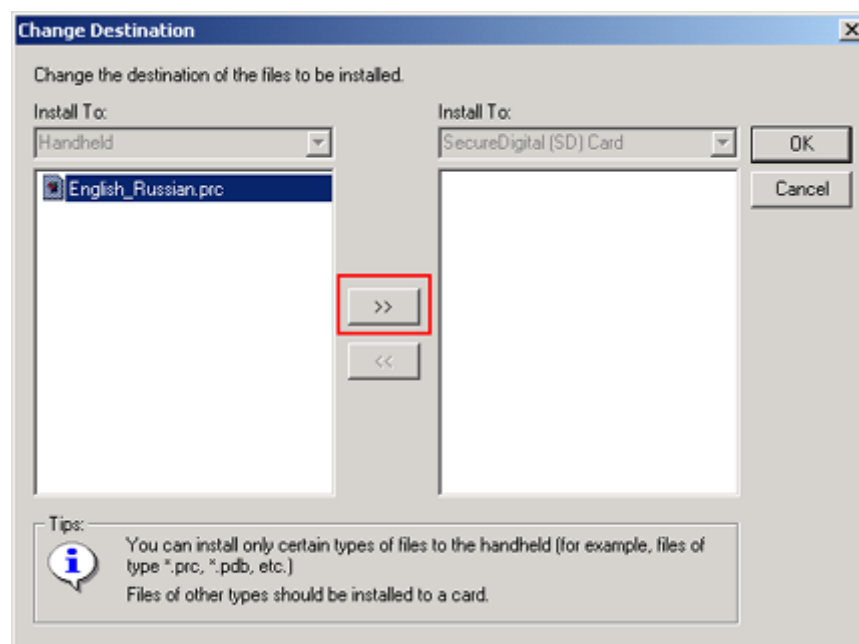
If you want to install the whole “SlovoEd” (the program and the dictionary files) to expansion card (Memory Stick, Compact Flash, Secure Digital, MMC), you should do the following:

1. Synchronize your device with the expansion card inserted with your desktop computer.
2. On the desktop computer click twice on a dictionary file (for example, on the **English\_Russian.prc** file). Then you will see the following window:



3. Select the file and press the Change Destination button.

4. Select the file once again and move it into the expansion card window.

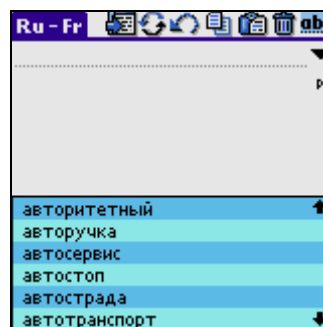


5. Then press the OK button.
6. Repeat this procedure for each dictionary file and then press the synchronization button on your device.


You can also install **“SlovoEd”** to the main memory first and then move it to the expansion card or move only dictionary files to the expansion card. You can read about how to do this in the **Installation to expansion card** section of the **Using “SlovoEd”** paragraph.

## How to use “SlovoEd”

After starting the **“SlovoEd”** program the screen your organizer will look like in the picture below:



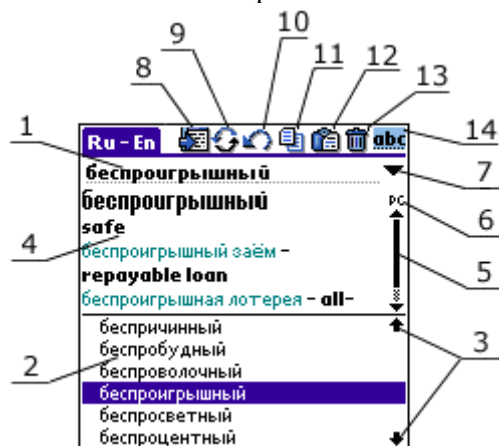
There is an edit field for entering words to be translated at the top of the screen. You can enter words in this field in different ways:

- Using Graffiti.
- Using on-screen keyboard.
- Using the Copy-Paste operation. Paste your text by using the Paste item from the Edit menu, using Graffiti or by tapping the button  at the top of the screen.
- Turning on the **Paste on start** option in the **Options** menu. If this option is switched on, the Clipboard content will be pasted automatically into the edit field whenever you start the program.

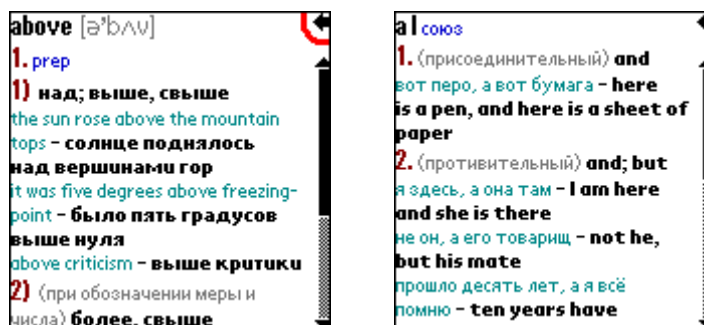
If a word entered in the field exists in the dictionary, its translation will be displayed under the edit field. You can look through the dictionary by clicking the arrows on the screen or by pressing the Up/Down buttons on the case of your Palm device.

## Interface elements

The elements of the program interface are shown in the picture below:



1. The Edit field.
2. The List of the dictionary words.
3. The scrolling arrows. Using these arrows you can scroll the list of the dictionary words. Or just use the Up/Down buttons on your device case to scroll the list of the dictionary words.
4. The translation of the word entry. You can unwrap a word translation on the full screen (using button 8).



The word entry text is formatted with colors<sup>3</sup>, which usually mean the following: part of speech is **blue**, word-combinations and phrases are **green**, translation of the word is black, additional information (transcription or description) is **gray**.

5. The scrollbar. You can scroll a long word entry when the content doesn't fit the screen.
6. The Graffiti indicator. It allows you to see a current Graffiti layout and to switch between national and default languages. If you use the localization system PiLoc 2.20 and higher, the indicator allows you to switch between the pair of dictionaries.
7. The “History” button. History displays 10 last searched words.
8. The “Full screen” button. By pressing this button, you will see the translation of any word in full screen mode. To return to the main window of the dictionary, tap the arrow in the right top corner of the screen.
9. The “Dictionary” button. It switches a current dictionary to the paired one.

You can also switch the dictionary in one of the following ways:

- Using the menu item “Switch dictionary”

<sup>3</sup> Text is formatted with gray scales on devices with black and white screens (if your device supports gray scales).

- By pressing a hardware button assigned for starting “SlovoEd”
  - By beginning to type in the language of the paired dictionary
  - By changing a current Graffiti layout
  - By double tap on a word in the translation field (almost every word in the translation field is a link to another word entry).
10. The “Back” button. It shows previous word entry.
  11. The “Copy” button. It copies a selected word into Clipboard.
  12. The “Paste” button. It inserts Clipboard contents into the edit field.
  13. The “Clear” button. It clears the edit field.
  14. The “Select” button. It selects the contents of the edit field.

## Dictionary menu

The “SlovoEd” menu includes three sections:



**Edit** menu performs the Copy, Paste, Select and Clear operations with the text in the edit field. Besides, you can open the system keyboard or the Graffiti help using this menu section.

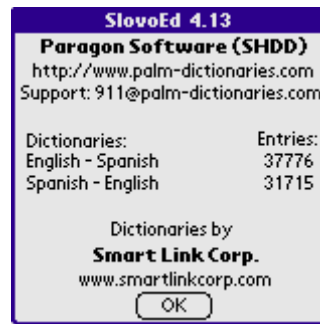
The menu item **Dictionary > Change dictionary** allows you to change an active dictionary, delete any available dictionary or move any available dictionary to the expansion card.



**NOTE:** If you delete a dictionary from the list, in case it is bi-directional, the paired dictionary will also be deleted. For example, if you want to delete the English-French part of the bi-directional dictionary, it will be deleted together with the French-English dictionary.

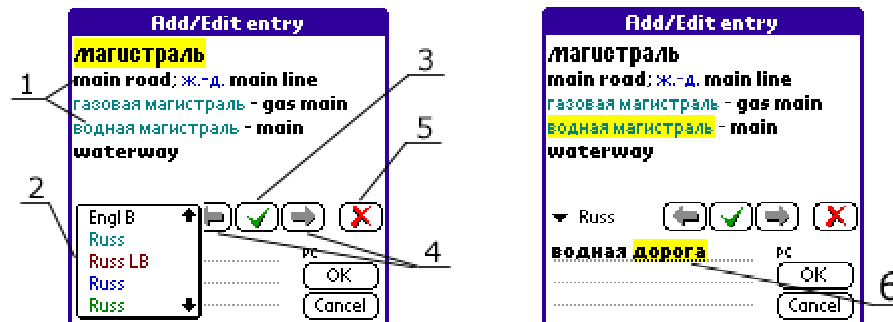


The menu item **About SlovoEd...** displays information about the active dictionaries and the number of available entries.



## How to add new word entries and edit existing word entries

The menu item **Dictionary->Edit translation** allows you to edit the translation of any word entry in any dictionary.



The translation of the word entry is highlighted with different colors.

The **Add/Edit entry** window has the following elements:

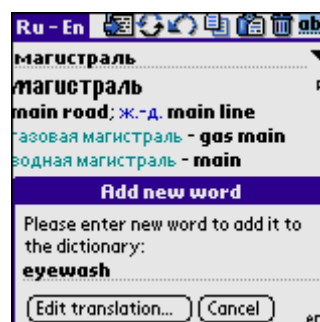
1. Word entry translations
2. The list of styles used to distinguish the elements of the translation
3. The “Apply” button to apply changes made to an entry
4. The next or previous element of the translation
5. The “Delete” button, which deletes any element in translation
6. Edit field elements.

To edit the translation of any word entry, go to the element of the translation to be changed by using buttons 4 and make desired changes. Then tap the “Apply” button. Your changes will take effect. Tap the “OK” button, if you accept the new appearance of the translation.

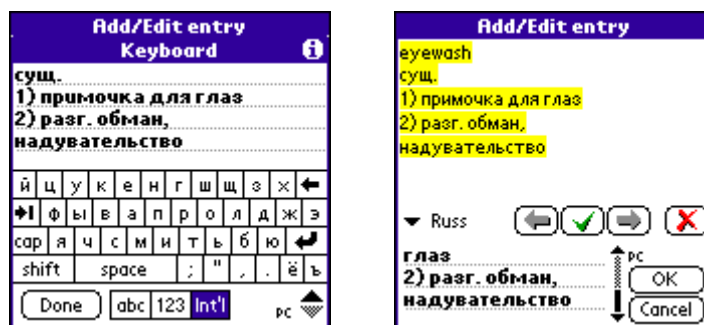
To add a new word and its translation, use the menu item **Dictionary->Add new entry**.

To add a new entry, do the following, please:

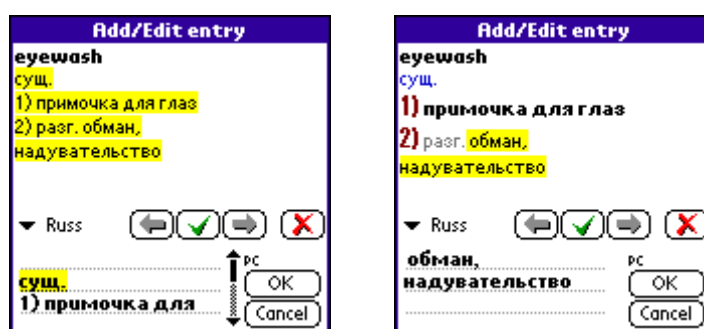
1. Enter a new word. This word will appear later in the list of the dictionary entries.



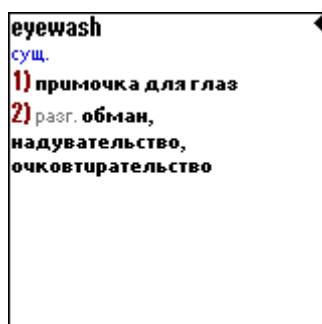
- Then tap the “Edit translation” button to enter a translation of the new word. Set the cursor in the edit field of the “Add/Edit entry” window and enter the translation for the new word.



- Select the elements of the translation one after another and choose styles for them.

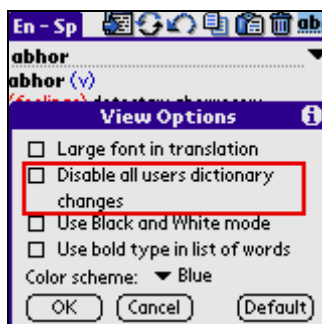


- When you finish editing the translation, tap the “OK” button. You will see the new entry in the dictionary.



To delete a dictionary entry, use the menu item **Dictionary->Delete selected entry**.

You can disable all your changes of the dictionary at any time using the menu item **Options > View Options**:



## How to learn new words using “SlovoEd”

“SlovoEd” has a special feature, which gives you a convenient and quick way of learning new words. This feature allows you to add new words to Flash Cards and pass a quiz on them. If you are looking at the translation of the word and you want to learn it, just do the following: open the menu and choose the menu item **Add Flash Card**. Add other words you want to learn to Flash Cards in the same way.

If you have already added several new words to Flash Cards, you can try to pass a quiz on these new words. To start the quiz you should choose the menu item **Flash Cards Quiz**. The quiz will go on in the following way: one of the words added to Flash Cards will be shown to you. You should recall the translation of the word. Then you should check if you gave the correct translation (just tap at the center of the screen). You will see the correct translation of the word. Two buttons appear in the window: **Right** and **Wrong**. Tap one of these buttons so that the program could save the result.

When you have finished answering all test questions, you will see statistics: the number of the right answers, the number of the wrong answers, and the number of the skipped questions.

Later on start the test again. On the basis of statistics the program will decide what words you have already learned. The more you give the right translation of the certain word, the less you will be asked to translate this word. You can delete a Flash Card, which has bothered you, using the menu item **Delete Card**.



There is also another way to learn new words – Word of the Day. Every day a word and its translation will be chosen at random and shown to you in full screen mode when you first start the dictionary. It means, that a random word and its translation will be shown in the full screen mode. You can either just look at this word or add it to a Flash Card. Some options of this feature are available in the menu item **Options > Word of Day**.



## Options

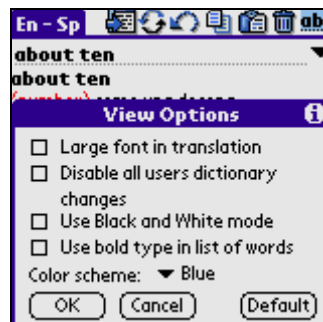
You can adjust the “SlovoEd” functionality in the **Options** menu. The **Option** menu has four sections: Common Options, View Options, Resident Options, and Word of the Day Options.

## Common Options



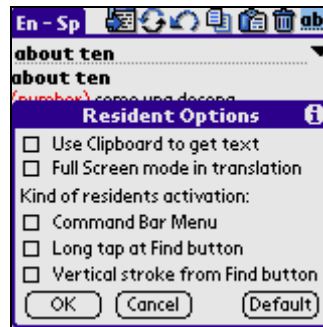
- **Paste on start.** If this option is switched on, the content of the Clipboard will be inserted into the edit field every time the program is started.
- **Paste selected text when changing dictionaries.** If you select text and switch the current dictionary to the paired one, the text selected in the translation field of the former dictionary will be inserted into the edit field of the latter dictionary and search will be started.
- **Do copy with Exit.** When you exit “SlovoEd”, the translation of the latest searched word is copied to the Clipboard. If this option is on, you can paste the translation from the Clipboard to any document.
- **Cache cards dictionaries.** If you want to use a dictionary, which is installed on the memory card, a part of it will be put into the cache when you first run “SlovoEd”. This procedure makes “SlovoEd” work faster. Read more about this option in the **Installation to expansion card** section.
- **Clear history.** The whole history (the latest 10 words that you searched in the dictionary) will be erased.

## View Options




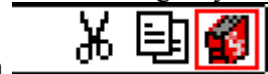
- **Large font in translation.** All the words in the translation field will be displayed in a large font.
- **Disable all user dictionary changes.** All users’ changes of word entries will be hidden.
- **Use black and white mode.** The color formatting of the word entries will be disabled.
- **Use bold type in list of words.** The list of the dictionary words will be shown in a bold font.
- **Color scheme.** The list of the dictionary words and the history of the search can be painted according to 5 different color schemes.

## Resident Options



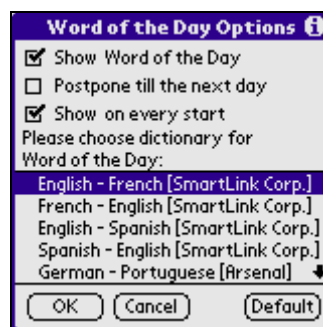
- **Use Clipboard to get text.** In some applications, the clipboard is necessary for the resident module to work. Such applications include Mail, Web applications (such as AvantGo, Blazer, WebClipping), WordSmith, DocumentsToGo. This option sets whether resident will be able to get a selected text in the above described applications. If you turn on this option, you can lose some clipboard data (but not necessarily).
- **Full Screen mode in translation.** In the resident module you will see all translations in the full screen mode.
- **Kind of resident activation.** There are three ways to activate the resident module:
  - Tap and hold the «Find» icon in the Graffiti field. If you tap at this icon quickly, the standard Palm OS “Find” function will be launched. If you tap-&-hold this icon, the resident module will be launched.
  - With a vertical stroke of the stylus from the «Find» icon in the Graffiti field to the «Calculator» icon.
  - Using the Command Bar menu. You should use this method in the following way: draw the

stroke  in the Graffiti field and then tap the dictionary icon



in the

## Word of the Day Options



- **Show Word of the Day.** If this option is switched on, once every day a word will be chosen at random and shown to you when you first start the dictionary.
- **Postpone till the next day.** If you do not switch on your device for several days, the Words of these Days will be postponed till the day you switch on your device. Words of Days may be postponed for 15 days at most.
- **Show on every start.** If this option is switched on, Word of the Day will be shown to you every time you start the dictionary.
- In this window you can also select from which dictionary Word of the Day will be chosen.

## Installation to expansion card

If your device has an expansion card (Memory Stick, Compact Flash, Secure Digital, MMC), you can install dictionaries to the memory card, install the program to the card or install both of the program and dictionaries to the card.

### *Placing dictionaries on expansion card*

To move the installed dictionaries on the expansion card, open the **Change dictionary** menu and choose the dictionary you want to install on the card. Then tap the **Move** button.



If you move your dictionary onto the memory card, “SlovoEd” will work more slowly than if the dictionary were installed in main device memory. When you first run “SlovoEd”, a part of dictionary files is copied to the cache. After you exit the dictionary, the part of dictionary files can be saved in the cache or deleted from it. This feature is set with the **Cache cards dictionaries** option in **Common Options** (if this option is on, the part of the dictionary will be saved in the cache after you exit “SlovoEd”; if this option is off, the part of the dictionary will be removed from the cache and will be copied to the cache again when you start “SlovoEd” next time).

### *Placing the whole program onto the expansion card*

To move the whole program from the main memory to the memory card you should do the following:

1. Switch off the resident module. To do this, open the menu and choose **Options > Resident > Kind of resident activation**. Then remove all ticks in the checkboxes in the resident activation menu.
2. Open the **Copy** menu in the Palm Applications window.
3. Choose “SlovoEd” and copy it to the memory card.



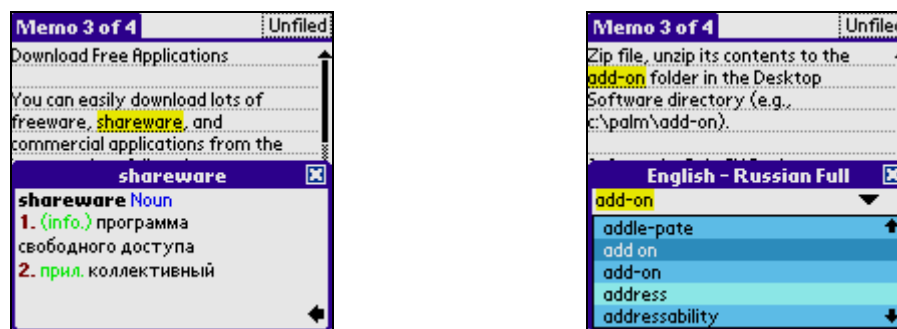
Then go to the memory card and run “SlovoEd” from the card.

**NOTE:**

1. If you start the “**SlovoEd**” engine from the memory card, you won’t be able to use the resident module of the program.
2. If you want to use the MultiLex dictionaries, the engine of the program (the files MultiLex.prc and SlovoEd.prc) should be installed in main device memory. Only dictionary files may be installed on memory card.

## Using the resident module


After choosing a kind of the resident activation you will be able to use the resident module of “**SlovoEd**”. You can then translate words without exiting a current application. Just select a word you would like to translate and launch the resident module in the way chosen in the **Resident Options** window. The resident window will appear on the screen. If the dictionary doesn’t contain this word, you’ll see the list of surrounding words. If the word is included in the dictionary, you will see its translation.




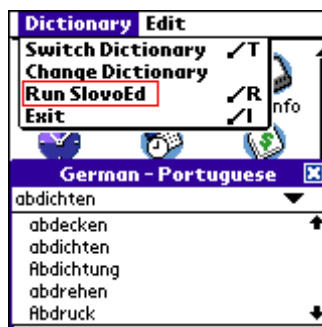
If you want the resident to show translations in the Full Screen mode, go to the main window of “**SlovoEd**” and turn on the **Full Screen mode in translation** option in **Resident Options**. If you want to see only a certain long word entry in the full screen mode, you should open the menu in the resident module and choose **Full Screen mode**.



If the translation list is being displayed, you can go to the translation of the previous or the next entry in the dictionary by pressing the **Up/Down** hardware buttons on the case of your device.

When the resident is displaying the translation of the word entry, you can return to the search mode by selecting the **Go to Search** item in the **Dictionary** menu, by tapping the  button, or using the Backspace shortcut in the Graffiti field.

The resident module uses the same settings as the main program “**SlovoEd**” (which were set in the **Options** dialog of the main program). If these settings don’t satisfy you or you don’t like the functionality of the resident module, you can launch the main program using the menu item **Run SlovoEd** or the shortcut  **R**.



You can copy a portion of the translation into the Clipboard either manually or automatically (if you checked the option **Do Copy with Exit** in the **Common Options** window).

You can close the resident module window by tapping on the close button in the right top corner of the resident window or by tapping anywhere beyond the resident window. You can also close the resident window by selecting the menu item **Exit** in the **Dictionary** menu or by drawing the shortcut ✓ I.

You can switch between paired dictionaries by selecting the **Change dictionary** item from the menu or by drawing the shortcut ✓ T.

**NOTE:** The program is cycling reset protected. In case the device reboot happens more than once in a minute, the resident part of “**SlovoEd**” doesn’t run.

## Uninstallation

1. Switch off the resident module. To do this, open the menu and choose **Options > Resident > Kind of resident activation**. Then remove all ticks in checkboxes near the kinds of the resident activation.
2. Go to the Applications screen (tap the HOME icon in the Graffiti field).
3. Open the menu and choose App > Delete. Then select “**SlovoEd**” and delete it.

## Customer support service

If you have any questions concerning the “**SlovoEd**” and MultiLex dictionaries, **PiLoc**, games «**Another Ball**», «**Another Bottle**», «**One for all Solitaires collection**» or any other software by Paragon Software (SHDD), contact with our customer support service, please: [palm\\_support@penreader.com](mailto:palm_support@penreader.com)

Tel: (095) 408-61-79, 408-76-77

(Operation time of technical support line is 11.30 - 19.00 Moscow time)\*

Web: <http://www.palm-dictionaries.com>



---

## How to buy “SlovoEd” dictionaries for Palm OS

To register your dictionary you should enter the serial number. You will get the serial number after buying the dictionary. You can find the detailed information about buying procedure on our web site:

[http://www.penreader.com/PalmOS/SlovoEd/articles/Shopping\\_area\\_for\\_SlovoEd.html](http://www.penreader.com/PalmOS/SlovoEd/articles/Shopping_area_for_SlovoEd.html)

Please contact us if you have any problem with placing your on-line order: [palm\\_support@penreader.com](mailto:palm_support@penreader.com)

**Dear customers!**

**Your reports and comments are much appreciated.**

**They help us to improve our programs quality.**

**Thank you in advance for your reports!**

---

\* **When calling from outside Russia, please consider time shifts:** Moscow is 11 hours ahead of San-Jose, 8 hours ahead of New York, 3 hours ahead of London, 2 hours ahead of Munich and Paris, 6 hours behind Tokyo. Moscow office operation hours are from 11.30 till 19.00 by Moscow local time.



© Paragon Software (Smart Handheld Devices Division)  
Dolgoprudny, Moscow Region, Russia