

Pocket Tunes 5.0.0

for Palm OS®



www.pocket-tunes.com

Copyright © 2002-2009 NormSoft, Inc.
All rights reserved.

Table of Contents

[1 Introduction](#)

[1-1 Features](#)

[2 Registration / Purchasing](#)

[2-1 Entering Registration Code](#)

[3 Requirements and Compatibility](#)

[4 Installing](#)

[5 Copying Audio Files](#)

[5-1 Copying Audio Files with Windows Media Player 10 or 11 or online music store software](#)

[5-2 Copying Audio Files Using Windows Media Player 9](#)

[5-3 Copying Audio Files With A Card Reader](#)

[5-4 Copying Audio Files With HotSync](#)

[5-5 Copying Audio Files With A Third-Party Install Program](#)

[5-6 Copying Audio Files With Pocket Tunes Sync for iTunes](#)

[6 The Player](#)

[7 Choosing Songs](#)

[8 Playlists](#)

[9 Preferences](#)

[9-1 Advanced Preferences](#)

[10 Skins](#)

[10-1 Skin Preferences](#)

[11 Background Playback](#)

[11-1 Background Preferences](#)

[12 Graphic Equalizer](#)

[13 Crossfading](#)

[14 Bookmarks](#)

[14-1 Adding a Bookmark](#)

[14-2 Go to a Bookmark](#)

[14-3 Bookmark Preferences](#)

[14-4 Auto-Bookmark Feature](#)

[15 Internet Audio](#)

[15-1 The Internet Radio Catalog](#)

[15-2 Finding Other Internet Radio Stations](#)

[15-3 Listening to Radio Stations from Live365](#)

[16 Sending/Receiving Audio Files](#)

[17 Plugins](#)

[18 Album Art](#)

[19 Podcasts](#)

[19-1 Subscribing to a Podcast](#)

[19-2 Listen to a Podcast](#)

[19-3 Deleting a Podcast](#)

[19-4 Unsubscribing to a Podcast Subscription](#)

[20 Last.fm](#)

1 Introduction

Pocket Tunes turns your [Palm device](#) into a portable audio player! Play music, podcasts, and audio books from your collection, or subscribe to an online music service to gain access to millions of unique songs! With Pocket Tunes Deluxe, you can even listen to Internet radio anywhere that you have wireless Internet access.

Read below for compatible devices. Online music store access requires Pocket Tunes Deluxe and a paid subscription to one of many compatible music services. Online music store access is only compatible with some devices; please read the compatibility list below or check our web site for updates. Listening to Internet radio may incur data usage charges; please check your wireless data plan before using this feature.

1-1 Features

Pocket Tunes is the most feature-rich music player for the Palm and is designed to make music playback easy and fun!

- **Play music on your Palm-powered device**

Easily play music stored on your device's storage card, internal memory, or hard disk.

- **Broad range of supported music files**

Pocket Tunes plays MP3, WMA*, AAC**, aacPlus**, PCM WAV, and Ogg Vorbis files. (WMA, AAC, and aacPlus playback requires Pocket Tunes Deluxe.)

- **Access millions of songs and audio books from popular online music stores**

Pocket Tunes Deluxe supports all music stores that use Microsoft's Janus technology***. Look for stores with the PlaysForSure logo.

- **Listen to Internet radio**

With Pocket Tunes Deluxe, you can tune into hundreds of ShoutCast or Live365 radio stations on devices with built-in wireless connectivity.

- **Download podcasts directly to your phone/PDA.**

Pocket Tunes now includes a constantly-growing catalog of over 1,000 podcasts that you can subscribe to, or you can add your own favorites.

- **Sync your iTunes playlists with your device.**

Automatically or manually synchronize your music and playlists from iTunes on your PC or Mac.

- **Support for Last.fm.**

Every time you listen to a song on your Palm OS or Windows Mobile smartphone using Pocket Tunes Deluxe 5.0, this gets tracked to your Last.fm music profile - it's called scrobbling™.

- **Listen to audio books**

Pocket Tunes provides unique features (like bookmarks and auto-bookmarks) to make it a powerful companion when listening to books on the go.

- **Personalize your music with album art**

If you have included album art in your music collection, Pocket Tunes will display your selected art during music playback.

- **Use your Palm device normally while music is playing**

You're free to run any other application on your device while playing music or listening to Internet radio.****

- **Easily copy music**

Pocket Tunes integrates with Windows Media Player, Real Rhapsody, and many other music players on your PC to allow you to quickly and easily copy music to your device. Just plug it in, start Pocket Tunes, and go!

- **Find music quickly**

Pocket Tunes sorts your music by album, artist, genre, and playlist to allow you to quickly find what you're in the mood for.

- **Mix, shuffle, then repeat**

Quickly create playlists or pick songs one-by-one. Turn on the shuffle and repeat options to combine your music in ways you never expected!

- **Fine tune your music**

With features like crossfade, gapless playback, a high-fidelity equalizer, and many more, Pocket Tunes allows you unprecedented control over your music listening experience.

- **Personalize Pocket Tunes**

Choose from dozens of skins (many of them are free) at www.pocket-tunes.com/skins/ to make Pocket Tunes your own.

- **Lots more!**

Give Pocket Tunes a try, and we guarantee you'll be blown away! If not, contact our superb customer support team, and we'll do our best to make it right!

* WMA Lossless and WMA Professional are not currently supported.

** Music purchased from Apple's iTunes music store is not currently supported.

*** Music stores that we have tested include: Napster, Real Rhapsody. Pocket Tunes Deluxe supports both subscription and purchased content.

**** Some applications may have excessive CPU or storage requirements and may cause music playback to skip when performing certain operations. We go to great lengths to minimize this as much as possible. Devices with slow processors or hard disks are especially susceptible due to hardware restrictions.

2 Registration / Purchasing

Pocket Tunes is free to try for 15 days. After that, you must purchase a registration code. There are two versions you can purchase: Pocket Tunes Basic and Pocket Tunes Deluxe.

Pocket Tunes Basic \$19.95

Pocket Tunes Basic provides playback of MP3, WAV, and Ogg Vorbis files, including background playback so you can play music while you use other applications, customizable skins, full playlist capabilities, album art, a graphic equalizer, and much more! Pocket Tunes Basic includes free updates to all future 5.X versions of Pocket Tunes Basic, when available.

Pocket Tunes Deluxe \$37.95

Pocket Tunes Deluxe includes all the features of Pocket Tunes Basic and adds WMA and AAC/aacPlus playback, online music store support, crossfading, gapless playback, bookmarks, and Internet audio. Pocket Tunes Deluxe includes free updates to all future 5.X versions of Pocket Tunes Deluxe, when available.

For upgrade options and prices, please visit our web site.

You can purchase online using our secure ordering system at www.pocket-tunes.com. All major credit cards are accepted, and you will receive your code within minutes of your purchase.

Pay once, use forever: Pocket Tunes is **not** a subscription. Once you pay for it once, the version that you purchased is yours to use for as long as you like. [more info](#) (Prices as of December 2006. Subject to change without notice.)

2-1 Entering Registration Code

When you purchase, you will receive a registration code. (Pocket Tunes 5.0 registration codes are eleven characters long: five letters or numbers followed by a hyphen and five more letters or numbers.) Entering it is simple.

1. Start Pocket Tunes on your Palm.
2. If the registration reminder appears, do the following:
 - a. Tap the dotted line or area above the "OK" button.
 - b. Enter your 11-character Pocket Tunes registration code.
 - c. Tap "OK" to finish entering your registration code.
3. Otherwise, do the following:
 - a. Tap the "Menu" icon or press the "Menu" button on your device.
 - b. Tap the "Help" menu.
 - c. Tap the "Register" or "Upgrade" menu item.
 - d. Tap the dotted line or area above the "OK" button (if there is a registration code there already, highlight it).
 - e. Enter your 11-character Pocket Tunes registration code.
 - f. Tap "OK" to finish entering your registration code.

If you have any problems entering your code, [contact support](#).

Be sure to remember your registration code! You will need it if you ever need to re-install Pocket Tunes.

Note: Pocket Tunes 3.X and 4.X registration codes will not work with Pocket Tunes 5.0. If you are upgrading from Pocket Tunes 3.X or 4.X, you can run a 15-day free trial of Pocket Tunes 5.0. After that time, you will need to purchase Pocket Tunes 5.0 or reinstall Pocket Tunes 3.X or 4.X. We recommend that before upgrading you open the About screen in Pocket Tunes 3.X or 4.X and write down your 3.X or 4.X registration code!

3 Requirements & Compatibility

- **Required:**

- Supported Devices: Palm 650, 680, 700p, 755p, Centro, Tungsten T|X. [*](#)
- 3MB memory available on Palm for Pocket Tunes.
- Microsoft Windows XP and Windows Media Player 10 or 11 are required for online music store support.

- **Recommended:**

- 512MB or larger SD card for storing music.
- Windows XP or Vista and iTunes 8 or Windows Media Player 10 or 11 for synchronizing music between your PC and your device.
- Mac OS X 10.4 (Intel) or later and iTunes 8 for synchronizing music between your Mac and your Palm OS device.
- Unlimited wireless data plan for listening to Internet radio and downloading podcasts.

* Pocket Tunes 5.X may work on other Palm devices but is not actively supported.

4 Installing

Installing Pocket Tunes is very easy. Simply follow these steps:

On Windows:

1. Double-click the pTunes.exe file that you downloaded.
2. Follow the instructions that appear to install Pocket Tunes on your PC and/or Palm.
3. If you have an old version of Pocket Tunes installed, you must not be playing music. Open

the Pocket Tunes application (not the console) and tap the "Pause" or "Stop" button.

4. Perform a HotSync operation.
5. Pocket Tunes will be installed to the Multimedia category on your Palm.
6. If you have purchased Pocket Tunes Basic or Pocket Tunes Deluxe, enter your registration code as described [above](#).
7. You are done! See the [section below](#) for information about copying music to your device.

On Macintosh:

1. You will need a program to extract ZIP files. For Macintosh, [Stuffit Expander](#) is a popular program.
2. If you have Pocket Tunes already installed, you must not be playing music. Open the Pocket Tunes application (not the console) and tap the "Pause" or "Stop" button before installing the new version.
3. Open the folder containing the installation files with Finder.
4. Open your Palm Desktop Quick Install (In the conduit menu it says "Install files to handheld").
5. Drag the "PocketTunes" file from the Finder window to the Palm install window.
6. If you wish to install the included skin, also drag SleekBlue.pdb (or SleekBlueLowRes.pdb for low-resolution devices like the Treo 600) to the Palm install window.
7. If you wish to install the optional plugins for playing Ogg Vorbis or WAV files, drag the pTunesOgg.prc and/or pTunesWav.prc files to the Palm install window. (These files are in the plugins folder.)
8. Perform a HotSync to install the files.
9. Pocket Tunes will be installed to the Multimedia category on your Palm.
10. If you have purchased Pocket Tunes Basic or Pocket Tunes Deluxe, enter your registration code as described [above](#).
11. You are done! See the [section below](#) for information about copying music to your device.

5 Copying Audio Files

Before you can play any songs on your Palm device, you must copy audio files on to it. Audio files can be copied to an expansion card (e.g. SD or MMC) or to main memory. Some devices also include a built-in hard disk or flash memory that can store music. There are several methods to copy audio files to your handheld. Please read below and follow the instructions that are appropriate for you. We strongly recommend using Windows Media Player to copy audio files.

5-1 Copying Audio Files with Windows Media Player 10 or 11 or online music store software

If you have Windows Media Player 10 or 11 and you have a device that is supported for playing music from online music stores (see the [Requirements & Compatibility section](#) above), then you can copy music using a number of applications designed to work with portable media devices. This includes Windows Media Player 10 and 11, Napster, Rhapsody, and Yahoo! Music Engine, among many others. For these applications, please follow their instructions for copying music to a portable device.

Important: Be sure you have installed the Windows Media Player Integration option when you installed Pocket Tunes! If you installed Pocket Tunes wirelessly, you probably have not installed this. Download Pocket Tunes from our web site and run the installer.

For Windows Media Player 10 or 11 (with supported devices), follow these instructions:

1. Connect your Palm device using its USB cable, or place it in its cradle.
2. On your Palm, start Pocket Tunes.

3. You may see a dialog similar to this one (the choices will vary, depending on the software you have installed):



4. If you do not see this dialog, check your music player software. If the device does not appear there, you probably have an incompatible device. Please check the [Requirements & Compatibility section](#) above and check your Communication mode on the "Copy from PC Prefs" screen in Pocket Tunes - it should be set to MTP. You can copy music with Windows Media Player by following the instructions in the following section.
5. Click on "Synchronize media files to this device using Windows Media Player" and then click OK.
6. You will now be able to "sync" music to your device using Windows Media Player. Please consult the Windows Media Player documentation for instructions on how to copy music to portable devices and how to set up sync relationships.

5-2 Copying Audio Files Using Windows Media Player 9

If you have Windows Media Player 9, or if you are using a device that does not support online music stores, you can still copy files directly to your Palm over the USB cable or cradle. Please make sure to install the Windows Media Player integration (see [section 4](#) for installation instructions). (For Ogg Vorbis users: To copy Ogg Vorbis files using Windows Media Player, you will need to install an Ogg Vorbis plugin, available from <http://www.illiminable.com/ogg/>.)

1. Connect your Palm handheld using its USB cable, or place it in its cradle.
2. On your Palm, start Pocket Tunes.
3. Start Windows Media Player on your PC. (If you start Windows Media Player before your Palm is connected, your device may not be detected correctly.)
4. In Windows Media Player, click on "Media Library" and select the audio files that you would like to copy.
5. Right click on the audio files and select "Copy to CD or Device".
6. On the right-hand side, you should now see a dropdown with a list of devices. (The CD Drive is usually the default.)
7. From this drop down, select your Palm handheld. If you do not see your device, press F5 to refresh the list of devices.
8. Press the "Copy" button in the upper-right corner.
9. When the copying has completed, you may begin playing the new music! Tap the Open button to select music that you want to play.

When using Windows Media Player, new music is copied to the expansion card on your Palm

device. If you don't have an expansion card inserted, music will be copied to main memory. If you have more than one expansion card, Pocket Tunes will choose the one with the most available space.

Choosing Where Audio Files are Copied To

When copying music, Pocket Tunes picks the expansion card or storage device with the largest amount of free space. If there are no expansion cards available, Pocket Tunes will store the music in main memory. If you wish to override this behavior, you can do so by selecting the "Copy from PC Prefs" menu item in Pocket Tunes. On this screen, you can choose the destination location and folder for the audio files. It is recommended that you leave these set to the default values ("Automatic" and the default folder) for best operation.

5-3 Copying Audio Files With A Card Reader

To transfer an audio file to your memory card using a card reader, follow these steps:

1. Insert your flash memory card into your card reader.
2. Use Windows Explorer to copy MP3, AAC, aacPlus, WMA, Ogg Vorbis, or WAV files to the memory card. The recommended location for audio files is in the Audio directory on the root of the card. If that directory doesn't exist, you can safely create it.

5-4 Copying Audio Files With HotSync

To transfer an audio file to your memory card using Palm's HotSync program, follow these steps.

1. Start the Palm Install Tool. This is installed as part of Palm Desktop. On Windows, it is on your Start Menu under the "Palm Desktop" folder.
2. Click the Add button. The "Open" dialog will appear.
3. Where it says "Files of type:", select "All Files (*.*)".
4. Select an MP3, AAC, aacPlus, WMA, Ogg Vorbis, or WAV file (*.mp3, *.m4a, *.ogg, or *.wav) and click "Open".
5. Perform a HotSync.

Palm's HotSync program can sometimes be very slow for copying large files. To speed up installation, we recommend that you use Windows Media Player or purchase a card reader. A Secure Digital / MMC card reader can be purchased for around \$30 US and will drastically speed up audio file installation.

5-5 Copying Audio Files With A Third-Party Install Program

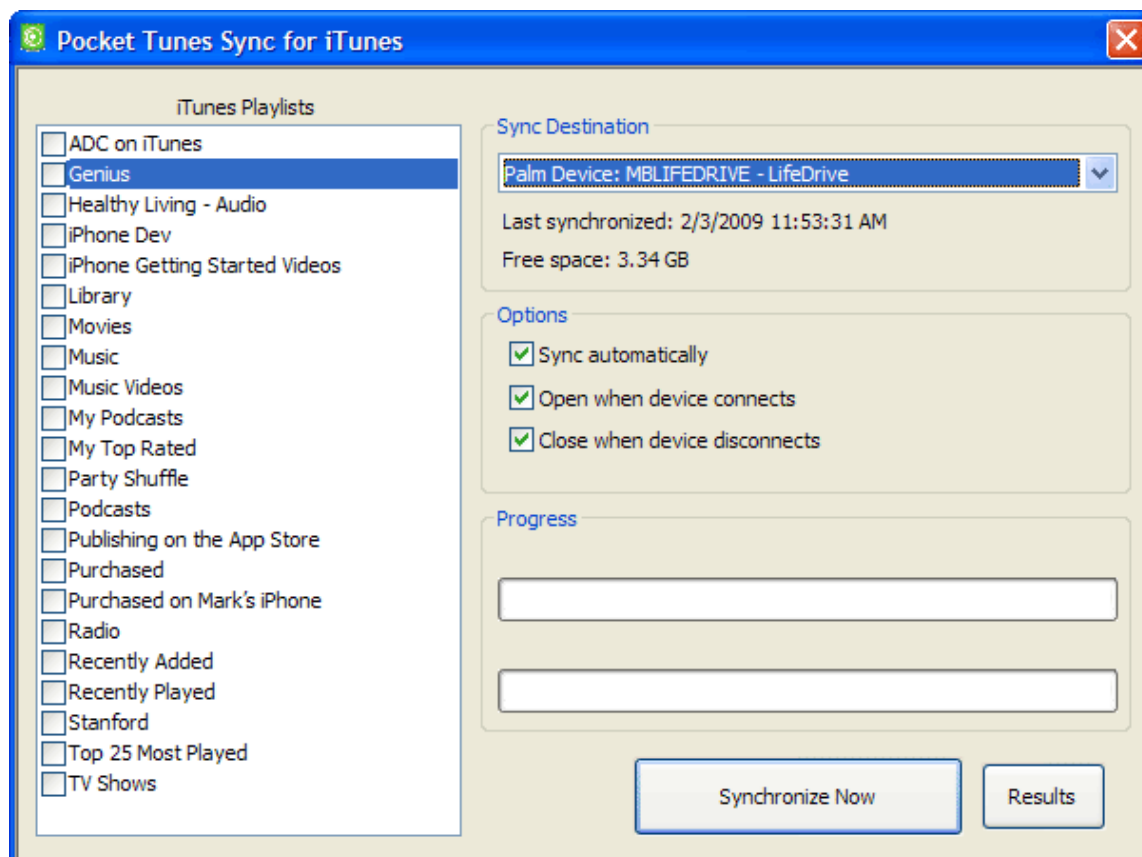
There are several software packages available to aid in installing programs and audio files to your Palm's memory card. For an incomplete and unofficial list of such software, please visit the Pocket Tunes Knowledge Base on our web site.

5-6 Copying Audio Files With Pocket Tunes Sync for iTunes

In order to copy audio files with Pocket Tunes Sync for iTunes, you must have installed it to your Windows PC or Mac when you installed Pocket Tunes. If you installed Pocket Tunes directly to your handset by downloading a PRC file over a wireless network connection, you will need to download the Windows or Mac installer for Pocket Tunes and install it on your computer, ensuring you leave the "Music Player Integration" item selected when prompted during the installation. You can download the Windows and Mac installers for Pocket Tunes at <http://www.pocket-tunes.com>.

Note that only unprotected files within your iTunes library can be played within Pocket Tunes. The "Pocket Tunes Sync for iTunes" PC client will skip any protected files that you attempt to synchronize to your device.

1. Connect your Palm OS® device using its USB cable to your PC.
2. Run "Pocket Tunes Sync for iTunes" by choosing "All Programs > Pocket Tunes > Pocket Tunes Sync" from the Windows Start Menu



3. Once the "Pocket Tunes Sync for iTunes" window appears, select the playlists you wish to copy to your device from the list of iTunes Playlists shown.
4. Select the "Synchronize Now" button.
5. The progress of the synchronization will appear in the progress bars near the bottom of the window.

6 The Player













When you start Pocket Tunes, you will see the player screen. This screen will look different depending on the skin that you have installed. All of the screen shots in the user guide are from the default skin ("Sleek (Blue)"). Note that if you have a device that supports landscape and portrait large screen views, the skin will resize to fit the screen, and the layout will be slightly different from what is shown here.





You can access many of the preferences and options of Pocket Tunes by displaying the menu. You can display the menu by pressing the menu key on your device's keyboard or by tapping the menu icon in the graffiti area of your device. Many of the menu items have hot keys, which are listed to the right of each menu item. You can access these functions quickly by pressing the corresponding key (you do not need to display the menu first).

The "Sleek (Blue)" skin was created by Tunji Afonja (www.gx-5.com) and Lance Wehrung (www.palmfocus.com)



Below is a description of the various parts of this skin.

 pocket tunes 5:48 pm 	Title Bar: Tap on this to display the menu. The title bar also includes a clock and battery meter for your convenience.
<div>The Thinker Gary Girouard Naked Piano Vol II</div>	Song Title, Artist, and Album: This area displays the current song's title, artist, and album name. Tap in this area to open the Song Information screen.
	Album Art: If the currently playing song includes album art (see section 18), it is displayed here. Tap this area to display the album art in full-screen mode.
<div>02:31  4:12</div>	Position Slider: Tap or drag to seek within the current song. Current play position is displayed to the left of the slider, and total track time is displayed to the right.
<div> <div>The Thinker 4:12</div> <div>Gabriel 3:23</div> <div>Prairie 3:00</div> <div>The Ring 3:57</div> <div>Sanctuary 4:46</div> <div>   </div> </div>	Playlist Panel: Shows the playlist or information about the current song. You can change what this displays by tapping on the song title or changing the option in the General Preferences. You can make this area bigger by pressing the open/close panel button.
	Repeat: When turned on, the playlist will continue to play over and over again.
	Shuffle: When turned on, songs will be played in a random order.
  68 %	Volume Slider: Tap or drag to change the volume. Current volume level is displayed to the right of the slider.
	Play: Tap this button to play music.
	Pause: Tap this button to pause the music. Tap again to resume.

	Previous Track: Tap this button to go back to the beginning of the current song. Tap again to go to the previous song in the playlist. Hold this button down to rewind.
	Next Track: Tap this button to go to the next song in the playlist. Hold this button down to fast forward.
	Choose Songs: Tap this button to open the Choose Songs screen and select new music to play.
	Internet Radio: Tap this button to open the Internet Radio catalog and choose a radio station to play.

7 Choosing Songs

When you are choosing songs to add to a playlist or to select songs to be played immediately, you will see the Choose Songs screen.



At the top-right of the screen is a drop-down that contains a list of the memory cards available. It also contains an entry called "Palm", which is for selecting audio files in main memory, and an option called "All" for browsing all of the music stored on your handheld. Select the memory card where your audio file is located, or pick "All" to browse your music by artist, album, genre, or playlist.

When you first select a memory card, Pocket Tunes will look for the default music directory (usually /Audio or /Music). If it exists, it will open it and display all of the audio files available. If it does not exist, Pocket Tunes will display the root directory of the flash card.

To select or unselect a song, tap on it. Once you have selected all of the songs you wish to play or add, tap OK. To select all of the songs in the current directory, tap "Select All" and then tap OK.

Subdirectories will appear with a folder icon next to them. To view the contents of a

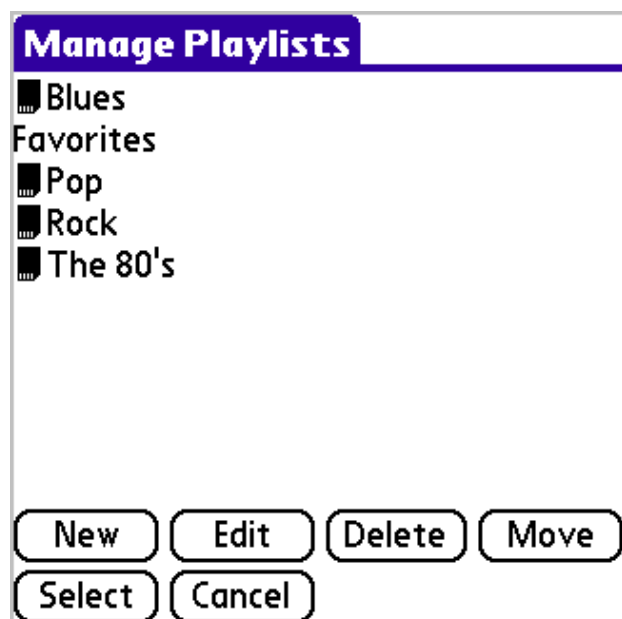
subdirectory, tap on it. A special folder called ".." will appear in all subdirectories. Tap on it to view the contents of the parent directory.

8 Playlists

Pocket Tunes allows you to create and manage playlists (groups of songs that you would like to play together).

Select "Manage Playlists" from the "Actions" menu to bring up the "Manage Playlists" screen.

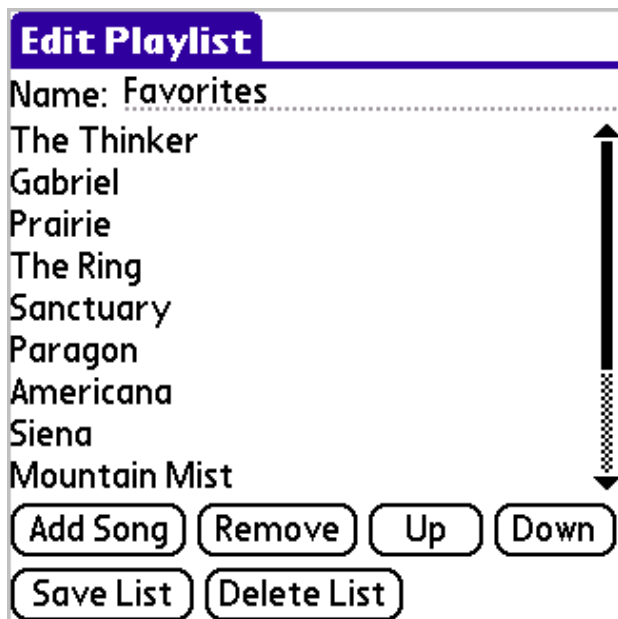
Tip: You can also double-click the select button on the 5-way navigator to bring up this screen.



Tap New to create a new playlist, Edit to edit an existing playlist, Select to select the playlist and begin playing it, or Cancel to cancel selection of a playlist. You can also tap Delete to delete the currently-selected playlist, or Move to move the playlist between main memory and an expansion card.

By default, new playlists are saved on an expansion card, if possible. If you select music from more than one expansion card, or if you select music stored in internal memory, then the playlist will be stored in internal memory on your Palm device. When playlists are stored on an expansion card, they are stored in the standard M3U format in the /PALM/Programs/PocketTunes folder. You can copy M3U playlists anywhere on an expansion card, but it is recommended that you store them in /PALM/Programs/PocketTunes or in the same folder as the music that it refers to. (If the pathnames in the M3U file are incorrect, Pocket Tunes makes an effort to search for the music that the playlist refers to, but it may not be able to find the music unless the M3U file is in the same directory as the song files.)

When you edit a playlist, you will see the "Edit Playlist" screen.



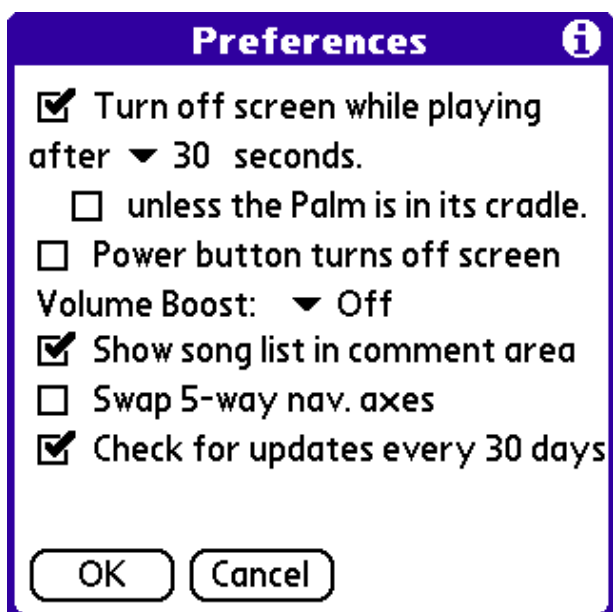
Tap "Add Song" to add a new song to the list. Tap Remove to remove the selected song from the list. Tap Up or Down to re-order the list.

When you have finished making changes to the list, tap "Save List" to save it and return to the "Manage Playlists" screen.

If you wish to delete the entire list, tap "Delete List".

9 Preferences

Tap on the title bar of the skin or on the menu icon (the lower-left icon on the silk screen area of your Palm) to bring up the Pocket Tunes menu. Select "General Preferences..." to display the preferences screen.



Check the **Turn off screen while playing** option to allow Pocket Tunes to turn off your LCD display in order to save power. Turning off your display will noticeably increase the battery life of your Palm while playing audio files.

Select 10, 30, or 60 seconds to determine how long Pocket Tunes will wait before shutting off the display.

Select **unless the Palm is in its cradle** to leave the Palm on while playing a song while in the cradle (or charging).

Select **Power button turns off screen** to use the power button to turn off the screen while playing music.

To enable the **volume boost**, select the amount of boost you wish to use from the dropdown. Note that any amount of volume boost is likely to degrade the audio quality, especially anything over +6dB. When using volume boost, you should have your volume set to the maximum (or near the maximum). If you don't, then lower the volume boost and increase the volume slider to increase audio quality and maintain the same volume. **Performance Note:** The volume boost setting does not add any extra overhead to Ogg Vorbis or MP3 decoding, but it may slightly slow down WAV files. This slowdown should not be noticeable.

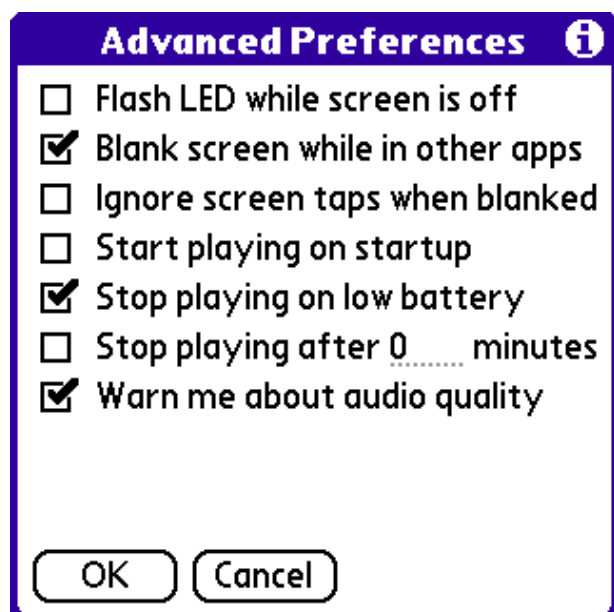
You can choose to display your current song list in the comments area on the main screen. If you select the **Show song list in comment area** option, you will be able to scroll through all of the songs in the current playlist and start playing them by tapping on them. Note that if your skin does not have a comments area, then this option will not have an effect.

When **Swap 5-way nav. axes** is unchecked (default), up/down will change the volume, and left/right will change tracks. When checked, up/down will change tracks, and left/right will change the volume. This preference only applies to devices with a 5-way navigator.

Select **Check for updates every 30 days** to have Pocket Tunes remind you to check for program updates every 30 days. You can only check for updates if you have a network connection available from your Palm (e.g. WiFi, Bluetooth, or cellular data network).

9-1 Advanced Preferences

Pocket Tunes has several advanced settings that you may wish to modify. To access the advanced preferences, select "Advanced Preferences" from the "Prefs" menu.



By default, Pocket Tunes will flash the LED indicator on your Palm while the screen is off so that you know it is doing something. You can turn this off by unchecking the **Flash LED while screen is off** option.

Select the **Blank screen while in other apps** option to allow the LCD to turn off while you are playing music in the background. Uncheck this option if you don't want the screen to be turned off while working in other applications.

Select **Ignore screen taps when blanked** to ignore pen taps on the screen while the LCD is turned off.

Select the **Start playing on startup** option to have Pocket Tunes automatically start playing the last song you were listening to when it's started.

By default, Pocket Tunes will pause playback when you get a low battery warning, which will allow your Palm to go to sleep and prevent it from running out of battery life. You can turn this option off by unchecking the **Stop playing on low battery** option.

Select **Stop playing after X minutes** in order to limit the amount of time that Pocket Tunes will play music for. After this time limit is reached, Pocket Tunes will pause the current song, and then the Palm will go to sleep as normal.

Select **Warn me about audio quality** to enable a warning message to appear whenever you select an option that could adversely affect the audio quality.

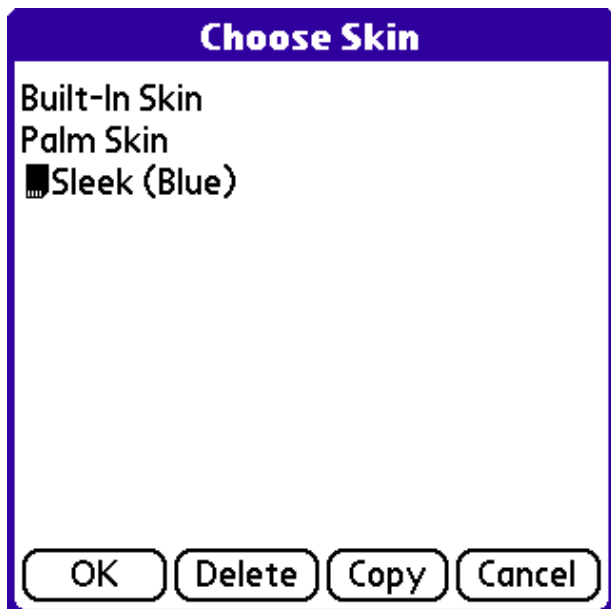
10 Skins

Pocket Tunes comes with support for "skins." A skin is an alternate graphical interface for Pocket Tunes. Visit <http://www.pocket-tunes.com/skins/> to view a list of available skins. If you're interested in making your own skins, there is information at that web site to help you.

To install a skin, double-click on its PDB file and perform a HotSync. Skins can also be installed on the flash card. To do this using HotSync, double-click on the skin and then use the Palm Install tool to change the destination to your flash card. If you are using a card reader, copy the skin's PDB file to the /PALM/Launcher directory on the flash card. You can also copy skin files to /PALM/Programs/PocketTunes (you may have to create this directory).

Next, run Pocket Tunes. Open the menu bar by tapping the menu icon on your silk screen, pressing the menu key, or tapping in the current skin's title area (where it says "Pocket Tunes"). Select "Choose Skin..." from the Tools menu.

A list of available skins will be displayed.



Tap on the skin that you would like to use and tap OK. To delete a skin, tap on the skin and then tap "Delete".

To copy a skin between main memory and your expansion card, tap "Copy". (You cannot copy the Built-In Skin.)

10-1 Skin Preferences

The "Skin Preferences" screen allows you to pick two "Custom Fonts." These fonts will be displayed in different places depending on the current skin chosen. By default, "Custom Font #1" is used for the title, and "Custom Font #2" is used for the song information.



On the "Skin Preferences" screen, you can also select **Show song duration in playlist**. This option is on by default and allows you to see the duration of each song when the playlist is displayed using your active skin.

11 Background Playback

Pocket Tunes will continue to play music even when you switch to another application. This is

called background playback.

You can enable or disable background playback from the Background Preferences screen (see below).

While Pocket Tunes is playing music in the background, you can bring up the Pocket Tunes console to control the playback of your music. By default, this is done by making a pen "swipe" with your stylus. While Pocket Tunes is playing in the background, put your stylus down on the "Apps" icon (to the left of the graffiti area), and drag it down to the "Menu" icon. Then lift your stylus, and the Pocket Tunes console will appear.

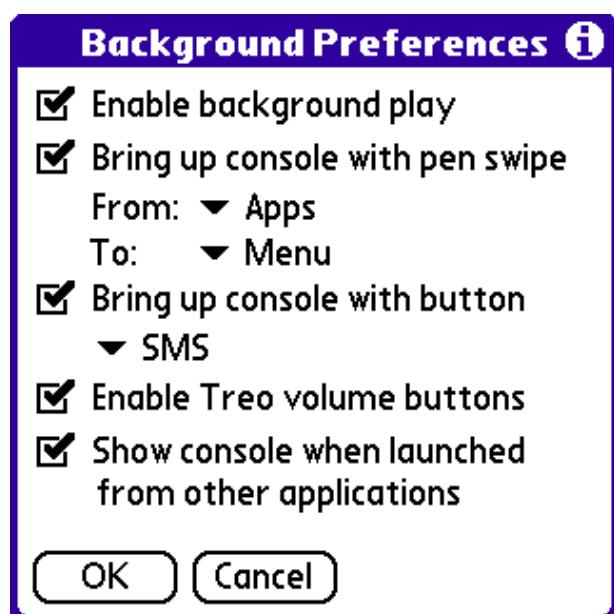


The controls in the console window are similar to the controls in Pocket Tunes. You can switch songs, play, pause, or change the volume.

If you tap on "Open Pocket Tunes," the Pocket Tunes application will be launched. You can also type the letter 'O' to open Pocket Tunes. Tap on OK (or press the space bar on devices that have a keyboard) to dismiss the console.

11-1 Background Preferences

To change the pen swipe used to bring up the console, select "Background Preferences..." from the Pocket Tunes menu.



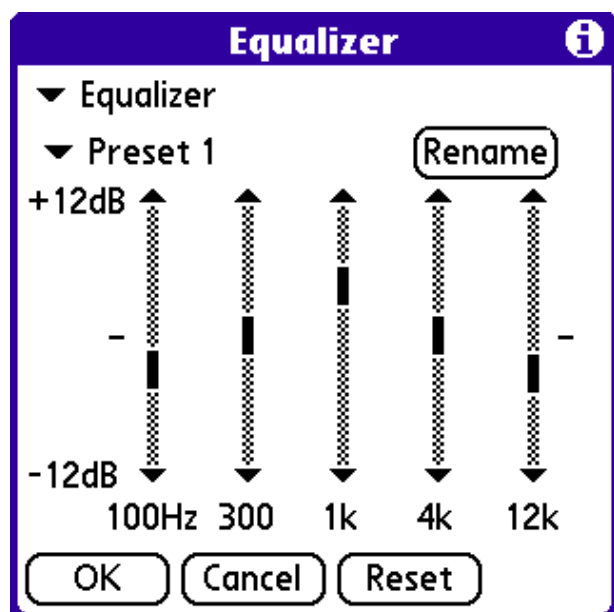
From this dialog, you can enable background play and also enable or disable the pen swipe or button press activation for the console. You can also configure the specific pen swipe or button that will bring up the Pocket Tunes console.

On smartphone devices, you will also see **Enable phone volume buttons**. When checked, you will be able to use the ringer volume buttons to control the volume of Pocket Tunes while music is playing. When music is stopped or paused, those buttons will control the ringer and phone volume.

Select **Show console when launched from other applications** if you want Pocket Tunes to display the popup console automatically when you play an audio file from another application (e.g. an email program or a web browser).

12 Graphic Equalizer

Pocket Tunes has a hi-fi graphic equalizer that you can use to fine-tune how your music sounds. To access the equalizer controls, select "Graphic Equalizer..." from the Pocket Tunes "Tools" menu.



There are three equalizer modes you can choose from: **Disabled**, **Equalizer**, and **Bass Boost**.

The bass boost setting enhances the bass of the music you are listening to.

The graphic equalizer allows you to enhance or diminish certain frequencies during playback.

There are 8 equalizer presets that you can customize as you wish. Tap the popup button and select the preset you wish to work on. Tap on "Rename" to set a name for your preset, and then change the equalizer controls to your liking. Press "OK" to save your changes. Your settings will take effect as soon as you tap OK.

Press the "Reset" button to reset the current preset settings to neutral.

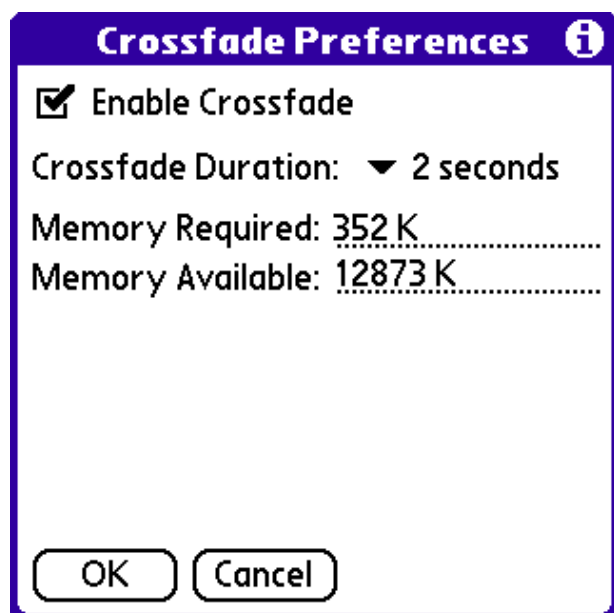
Performance Note: Turning on the graphic equalizer can slow down your Palm somewhat. (The bass boost setting will also slow down your Palm, but it will have much less of an impact than the equalizer.) If you notice any skipping or stuttering, try turning off the equalizer to see if it fixes the problem. Email support@pocket-tunes.com if you hear skipping or stuttering even with the equalizer turned off.

13 Crossfading

Pocket Tunes allows you to seamlessly fade from one song to the next. This feature is known

as crossfading. It is only available in the Deluxe version of Pocket Tunes.

To change the crossfade settings, select "Crossfade Prefs" from the Pocket Tunes "Prefs" menu.



To enable crossfading, select the "Enable crossfade" checkbox.

Set the desired crossfade duration by selecting the duration from the popup list. This duration is the number of seconds of overlap during which Pocket Tunes will fade from one song to the next. A duration of "gapless" means that Pocket Tunes will attempt to seamlessly blend two song files together without any gaps. This is most useful for audio files recorded from live albums or DJ mix CDs.

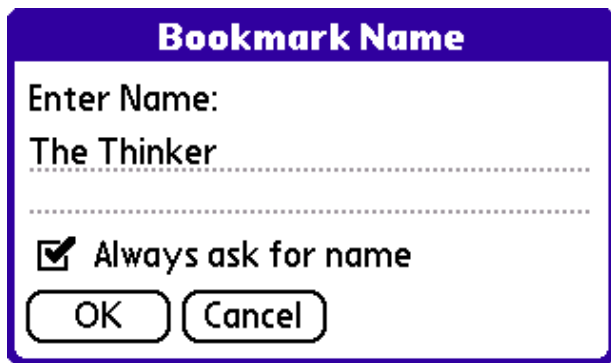
This feature of Pocket Tunes requires a certain amount of additional memory on your Palm device in order to prepare the audio information for crossfading. Longer crossfade durations require more memory. This screen displays your available memory and the amount of memory required for crossfading. Additionally, this screen includes a message indicating whether you have enough memory for crossfading.

14 Bookmarks

Pocket Tunes allows you to create bookmarks so that you can remember where you are in your audio file. This is particular useful for eBooks or recorded radio broadcasts (using [Replay Radio](#)), for example. Bookmarks are only available in the Deluxe version of Pocket Tunes.

14-1 Adding a Bookmark

To create a bookmark, select "Add Bookmark" from the Tools menu.



Bookmark Name

Enter Name:

The Thinker

☒ Always ask for name

OK Cancel

When the bookmark name dialog appears, enter the name of the bookmark and tap OK. (By default, the title of the song is used.)

If you want Pocket Tunes to always use the title of the song, then uncheck the "Always ask for name" option. (You can re-enable this using the Bookmark Preferences screen if you change your mind.)

14-2 Go to a Bookmark

To go to a bookmark (or manage your list of bookmarks), select the "Bookmarks..." menu item on the Tools menu.



Bookmarks

The Thinker	1:16
Gabriel	2:33

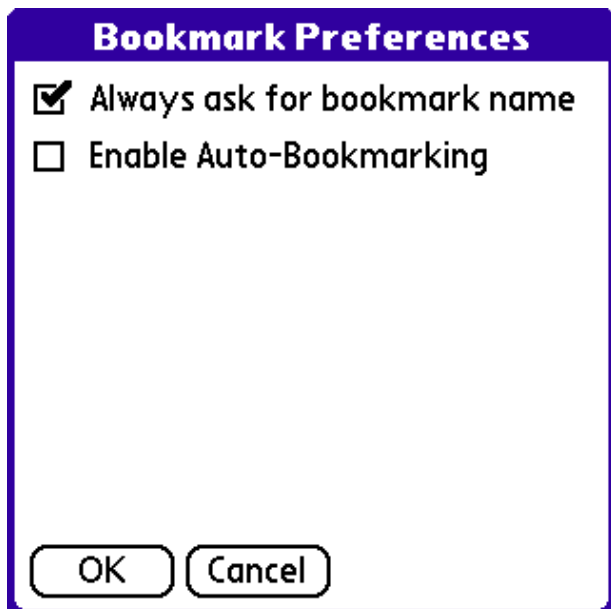
Go Rename Delete Cancel

Select the bookmark you wish to go to, and then tap the "Go" button.

To rename or delete a bookmark, select the bookmark and then tap the "Rename" or "Delete" button.

14-3 Bookmark Preferences

To change your bookmark preferences, select the "Bookmark Prefs..." option on the Prefs menu.



Check the "Always ask for bookmark name" option so that Pocket Tunes will always prompt you to give a name for a new bookmark. If you uncheck this option, Pocket Tunes will automatically use the name of the song as the bookmark name.

Enable auto-bookmarking by selecting the "Enable Auto-Bookmarking" checkbox. See the next section for details on auto-bookmarking.

14-4 Auto-Bookmark Feature

Pocket Tunes has an auto-bookmarking feature to automatically create bookmarks for you. When this feature is enabled (see the previous section for details on how to enable it), Pocket Tunes will automatically create a new bookmark whenever you press pause and then open a new audio file.

For example, if you are listening to an eBook, and you wish to play a music file, but you want to remember where you left off, follow these steps:

1. If auto-bookmarking is not enabled, then enable it.
2. Press the pause button to pause the playback of the eBook.
3. Press the open (or playlist) button to select the song or playlist that you want to play next.
4. Pocket Tunes will automatically create a bookmark for your eBook.

When you wish to return to listening to your eBook, follow these steps:

1. Select the "Bookmarks..." option in the Tools menu.
2. Select the bookmark for the audio book that you wish to listen to.
3. Tap the "Go" button.

15 Internet Audio

If you have an Internet-capable Palm handheld, Pocket Tunes can play MP3, AAC, WMA, and aacPlus formatted streaming Internet radio! You can listen to hundreds of stations streamed live over the Internet from web sites such as ShoutCast or Live365, or you can create your own station to broadcast your favorite tunes (additional software required - see www.shoutcast.com or www.live365.com for details).

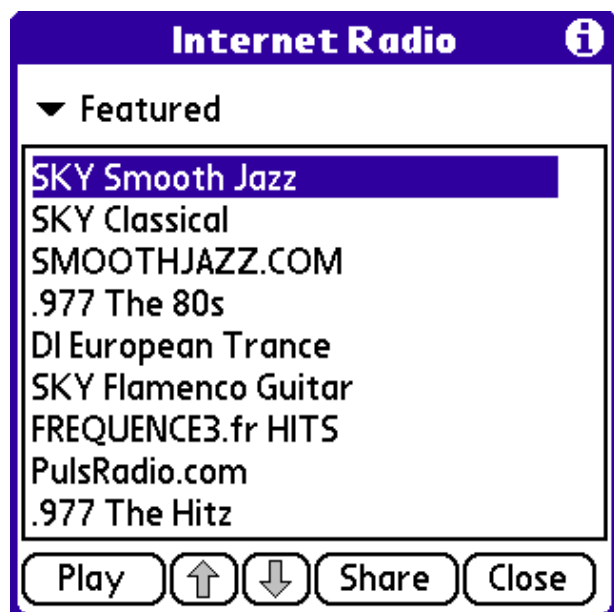
Important Note: You may be charged for wireless data usage by your Internet provider. Please

check your data plan before tuning into a Internet radio station. NormSoft is not responsible for any charges incurred due to using this software.

Connection Speed: Note that some Internet radio stations require a high bandwidth connection. Look for the "kbps" setting for the station. If it is 64 kbps or higher, then you may have trouble playing this station using a cell phone or modem.

15-1 The Internet Radio Catalog

Pocket Tunes includes an Internet Radio catalog to help make finding and listening to Internet Radio stations easier than ever. To open the Internet Radio catalog, choose "Internet Radio" from the "Tools" menu.



The first time you open the Internet Radio catalog, your Palm will download an initial set of Internet Radio stations from the Pocket Tunes web site. This pre-populated catalog can be periodically updated from the Pocket Tunes web site by choosing "Get Updates" from the "Update" menu within the catalog, or by enabling automatic update checks in the [Preferences](#) screen.

Stations in the Internet Radio catalog are divided into categories. The popup list at the top of the screen is used to choose which category is displayed. The list beneath the popup will show all the stations within the selected category. Selecting a station in the list and choosing "Play" will begin streaming the selected station. (For your convenience, all stations within the category will be loaded into the playlist, so that you can easily change channels between stations within the same category without returning to the catalog.)

You can use the "Add," "Edit," "Move," "Copy," and "Delete" actions on the Internet Radio catalog's "Station" menu to personalize the contents of the Internet Radio catalog.

Advanced: You can also tune into an Internet radio station from the "Choose Songs" screen. In the upper-right, select "All" from the popup trigger. Navigate "up" the music browsing display by repeatedly selecting the folder with ".." next to it, until you reach the top-level of the music browsing display (this level contains the options "All Content," "Artist," "Album," "Genre," "Playlists," and "Internet Radio"). Select the "Internet Radio" item and the music browse display will change to show the Internet Radio catalog categories. Select a category and the display will change to show the stations within that category. Select one or more stations and tap "OK" to begin playing the first selected station.

15-2 Finding Other Internet Radio Stations

The easiest way to find and listen to Internet Radio stations not included in the catalog downloaded from the Pocket Tunes web site is to visit www.shoutcast.com or www.treobits.com on your handheld's web browser. Look for a station that you want to listen to, and tap the "Tune In" button. Your handheld may ask you if you wish to Open or Save the file; pick "Open". It may also ask you if you want to accept the file; select Yes. Pocket Tunes will then load the station and start playing it within a few seconds.

After using your web browser to find a new Internet Radio station, the new station will be included in the "Unfiled" category in the Internet Radio catalog. You can use the "Move" or "Copy" options in the Internet Radio catalog's "Station" menu to include the station in another category or categories.

Pocket Tunes also supports playing Internet radio stations from premium services (such as www.di.fm) that require a username and password. To access these stations, use the "Add" option in the Internet Radio catalog's "Station" menu to add an Internet audio URL. The URL for the station should look something like this: **http://username:password@1.1.1.1:8096**

15-3 Listening to Radio Stations from Live365

NormSoft has made several Live365 stations available from its web site. Visit <http://www.pocket-tunes.com/mobile/> on your handheld and click on the Live365 link to list the stations available. You can also tune into any Live365 station by following the instructions below.

1. Visit www.live365.com on your PC.
2. Find a stream that you would like to listen to and follow the prompts to begin listening on your PC.
3. When the music begins playing, save the current playlist as an M3U file. (The mechanism for doing this depends on your music player. Usually you can select "Save As" or "Save Playlist" and save an M3U file.)
4. Copy the M3U file to your Palm using the Palm Install Tool or a card reader. If you use a card reader, copy it to /PALM/Programs/PocketTunes on your expansion card.
5. Go to the playlists screen in Pocket Tunes and choose the new playlist.

16 Sending/Receiving Audio Files

Pocket Tunes supports the Exchange Manager for playing music. This means that you can play music from web sites, receive music by email, and receive music over infrared. (Other software is required to take advantage of this support.)

Receiving Music

When you receive a supported music file, Pocket Tunes will ask you whether you want to save the music (so that you can select it from the Choose Songs screen later) or save and immediately play the music. Pocket Tunes may then ask you which card to save it to (if you have multiple cards). It will then save the music to the card and begin playing (if you chose to both save and play).

M3U Playlists

This feature is available in the Deluxe version only. Pocket Tunes can use M3U playlists to play music on the Internet. The entries in an M3U file can refer to an Internet audio URL or a non-streaming MP3 or Ogg Vorbis file. You can select an M3U file in any Exchange Manager compatible program (web browser, email application, etc.), and Pocket Tunes will play the

Internet music listed in the file.

Examples

Following is a list of some applications that are known to be compatible with Pocket Tunes's Exchange manager support.

Web Browsers

Most web browsers work with Pocket Tunes. Tap on a link to an MP3, AAC, aacPlus, WMA, Ogg Vorbis, WAV file, or other supported audio format to play it.

Email Software

Many email software that supports attachments, such as SnapperMail, will be able to use Pocket Tunes to play music attachments.

File Managers

Some file managers, such as FileProg, can be used to beam audio files to another Palm device with Pocket Tunes installed.

17 Plugins

Pocket Tunes supports plugins for adding support for additional music formats.

To view a list of the installed plugins, select **Plugins** from the **Tools** menu.

To delete a plugin, tap on the name of the plugin and then tap the **Delete** button.

Here is a list of the plugins available from NormSoft:

Pocket Tunes MP3 plugin

This plugin allows the playback of MP3 audio files. It is built-in to Pocket Tunes and cannot be deleted.

Pocket Tunes WMA plugin

This plugin allows the playback of Windows Media Audio (WMA) files. It is built-in to Pocket Tunes and cannot be deleted.

Pocket Tunes AAC plugin

This plugin allows the playback of AAC and aacPlus files. It is built-in to Pocket Tunes and cannot be deleted.

Pocket Tunes WAV plugin

This plugin allows the playback of WAV files (currently uncompressed WAV files are supported).

Pocket Tunes Ogg Vorbis plugin

This plugin allows the playback of Ogg Vorbis (OGG) files. More information on Ogg Vorbis can be found at www.vorbis.com

18 Album Art

Pocket Tunes supports the display of JPEG-encoded album art. The album art for a song can be included within the song file (in a "tag"), or it may be a separate file located in the same folder as the music file.

If you are using a skin that supports album art (as does the default skin included with Pocket Tunes 5.0), it will be displayed whenever a song with album art is playing. If not, you may view the song's album art by opening the song information screen (choose "Song Info" from the "Actions" menu) or you may view the art in full-screen mode by choosing "Show Album Art" from the "Actions" menu.

When viewing album art in full-screen mode, the displayed album art will change as new songs with album art are played. If a song without album art starts playing, Pocket Tunes will change from full-screen album art mode back to displaying the selected skin.

19 Podcasts

Pocket Tunes Deluxe lets you subscribe to and download podcasts directly to your device. To access the podcast functionality select or tap the "Choose Songs" icon (musical note in bottom left corner). From the top level menu within the "Choose Songs" screen select the "Podcasts" item. From the "Podcasts" view within the "Choose Songs" screen you can listen to and manage your existing podcast subscriptions, search or browse for new podcasts, and subscribe to podcasts.

19-1 Subscribing to a Podcast

To subscribe to a podcast you must first find the podcast you wish to subscribe to. There are two ways to find a podcast within Pocket Tunes Deluxe:

1. search for a podcast by keyword
2. browse the most popular and/or recently added podcasts

To search for a podcast by keyword select the "Search for Podcasts" item in the "Podcasts" view on the "Choose Songs" screen. In the "Search for Podcast" dialog that appears type the keywords you wish to search for and select "OK". In the list of podcasts that appear select the podcast that you want to subscribe to. On the "Are You Sure?" dialog that appears, select "Yes". Now the podcast you have subscribed to appears in the "My Podcast Subscriptions" view on the "Choose Songs" screen.

To browse the most popular and/or recently added podcasts select the "Browse Podcasts" item in the "Podcasts" view on the "Choose Songs" screen. Within the "Browse Podcasts" view that appears, select either the "Most Popular Podcasts" or "Recently Added Podcasts" item. From the list of podcasts that is then presented select the one you wish to subscribe to. On the "Are You Sure?" dialog that appears, select "Yes". Now the podcast you have subscribed to appears in the "My Podcast Subscriptions" view on the "Choose Songs" screen.

19-2 Listen to a Podcast

To listen to a podcast you must first subscribe to one or more podcasts as described in section [19-1](#). Once you've subscribed to one or more podcasts open the "My Podcast Subscriptions" view on the "Choose Songs" screen. This can be done by tapping the "Choose Songs" icon (musical note in the bottom left corner) and selecting "Podcasts" followed by selecting "My Podcast Subscriptions" from the main view on the "Choose Songs" screen. Choose one of the podcast subscriptions listed. From the list of podcasts, select the one you wish to play followed by the "OK" button and the podcast will begin playing.

19-3 Deleting a Podcast

Deleting a podcast removes it from your device if it has already been downloaded. To delete a podcast open the "Choose Songs" screen by selecting the "Choose Songs" icon in the bottom left corner of the screen (musical note) followed by selecting "Podcasts" then "My Podcast Subscriptions" from the main and subsequent menu. Navigate to the subscription containing the podcast or podcasts you wish to delete. Select the podcasts you wish to delete then select "Delete". Select "Yes" on the "Are You Sure?" dialog to complete the deletion.

19-4 Unsubscribing to a Podcast Subscription

To unsubscribe to a podcast subscription select the podcast subscription you wish to unsubscribe to by selecting "Podcasts", followed by "My Podcast Subscriptions", followed by the subscription. From the menu select "Unsubscribe..." followed by selecting "Yes" on the "Unsubscribe?" dialog that appears. The subscription will be removed from your device.

20 Last.fm

Every time you listen to a song using Pocket Tunes Deluxe, you can allow it to be tracked to your Last.fm music profile. This is called scrobbling™. Based on this profile, Last.fm creates customized radio stations of music you'll like. Plus, Last.fm also uses your music profile to give you: new music to listen to, concert listings in your area, music videos, free downloads, neighbors (people who like the same music you do), charts based on your listening history. For more information and to start using Last.fm, visit www.last.fm.

To enable scrobbling within Pocket Tunes select the "Last.fm" item from the "Tools" menu. In the "Last.fm" screen that appears, enter your Last.fm user id, password, and ensure the box labeled "Enable Scrobbling" is checked then select "OK".

Legal Information

NormSoft, Pocket Tunes™, and pTunes are trademarks of NormSoft, Inc.

Other marks are owned by their respective companies.

This product includes technology licensed from [Softick](http://www.softick.com).

Pocket Tunes Deluxe features aacPlus  developed by Coding Technologies.



Coding Technologies, AB (<http://www.codingtechnologies.com/>) owns patents, essential to practice the Parametric Stereo Technology, which are necessary for the implementation of aacPlus v2 in Pocket Tunes Deluxe. In addition Coding Technologies owns source code used for this implementation.