



MegaLauncher 6.4 (Apache)

Megasoft2000 Ltd.
Palm Software Division (PSD).

Index

- ▶ Description
- ▶ System requirements
- ▶ Installation
- ▶ **Launcher**
 - ▶ Upper toolbar
 - ▶ Calendar panel
 - ▶ Category toolbar and "Setup view"
 - ▶ Bottom toolbar
 - ▶ Button Adjustment
 - ▶ Operations with applications
 - ▶ Edit categories
 - ▶ Launcher Menu - "Main"
 - ▶ Launcher Menu - "Managers"
 - ▶ Launcher Menu - "Utils"
 - ▶ Preferences
 - ▶ Launcher Menu - "Info"
- ▶ **Commander**
 - ▶ Bottom toolbar
 - ▶ Operations with files and applications
 - ▶ Commander Menu - "Main"
 - ▶ Search Manager
- ▶ **Today**

Description [BACK TO INDEX](#)

MegaLauncher is a multipurpose application manager that can work on all modern Palm OS platform devices. Easy, intuitively understandable interface and the program philosophy enable you to study and accept this program in no time. Designed for considerable facilitation and time saving this program also enables you to effectively control all your applications and databases taking minimum steps. MegaLauncher comprises a set of multimedia and communications managers, which enclose the entire service package both for office and home use. Storage and information restore managers will help you in no time and without any difficulty restore the whole information on your device. Adjustment managers allow you to customize the view, color schemes and accompanying sound to your liking and requirements.

System requirements [BACK TO INDEX](#)

- Supports handhelds running Palm OS 5.0 or later.
- Supports Hi-Res (320x320), Hi-Res Plus (320x480) and Landscape mode (480x320) displays.
- Supports 16-bit color displays only.

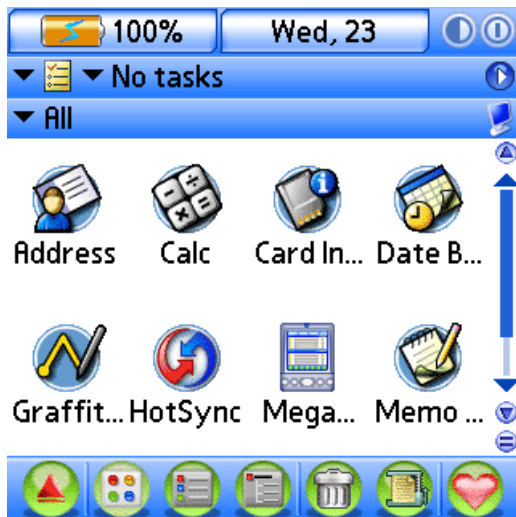
Installation [BACK TO INDEX](#)



To install this application you should synchronize the "**MegaL.prc**" application to your device. Files can be installed by using the Desktop S/W or just any other application.


Note! You should install at least one skin. Otherwise MegaLauncher won't launch.

MegaLauncher falls into 3 major components: **Launcher**, **Commander** and **Today**, which in their turn consist of a set of functional utilities.

Launcher [BACK TO INDEX](#)



The   buttons enable you to hide the upper and the lower toolbars correspondingly. To reclaim the toolbars, press these buttons again.

The  button - command fast access, enables you to access immediately all managers and functions existing in Launcher.

Upper toolbar [BACK TO INDEX](#)



The upper toolbar includes 2 (3,4) identical drop down lists that can be adjusted to display the desired system parameters.



Calendar panel [BACK TO INDEX](#)



This panel enables you to display ToDo and Date Book information.
To scroll the displayed information on the screen, press the button on the right.
All parameters adjustment of this panel is available from Interface Manager/Calendar panel.
You can always hide or adjust this panel at your own discretion.
To do this, use **Interface Manager/Calendar Panel**.

Category toolbar and "Setup view" [BACK TO INDEX](#)



Setup Launcher View

Columns: 2 3 4 5

Icon size: ▼ Large

Font: ▼ Normal

Toolbars: ▼ Both

Category: ▼ List

OK
Cancel

Bottom toolbar BACK TO INDEX



The Bottom toolbar contains icons for display view switching and for the most frequently used utilities.

Accordingly from left to right:

- Go to Launcher/Commander/Today
- View by Icon
- View by List
- View by Tree
- Trash Manager
- Common List
- Recent List

Button Adjustment BACK TO INDEX

5:00 pm

Free: 19%




▶ ◯

▼ No tasks


▶

▼ All

▶

Button Adjustment

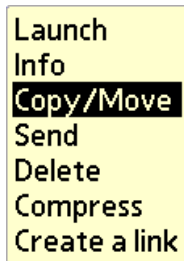
 ▼ View by Icon

OK
Cancel

To quickly replace the button function on the Bottom toolbar, you should touch and hold the desired button. In the window appeared select a new function for this button. The time of holding is adjusted in Menu/Options/Preferences/ Touch&Wait timeout.

Launcher makes it possible to perform major operations with applications in several ways. This is designed to provide each user with the opportunity to choose the most convenient working variant.

1. **"Touch-And-Wait"** - touch and hold with the stylus the icon of any application.



In the window appeared select the desired information. For example: to change the application category, select **"Info"**, then **"Application category"**

2. **"Drag-And-Drop"** - touch the desired application icon with the stylus and drag it to the Bottom toolbar. Instead of the stationary Bottom toolbar there will appear the toolbar with the operational icons:



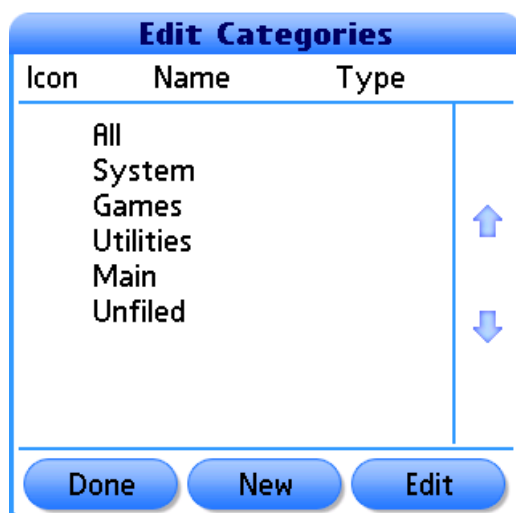
Bring the dragged application icon on the desired operation icon and drop the stylus from the screen of your device.

- Info
- Copy
- Move
- Send
- Delete
- Compress
- Favorites

For example: to change the application category, drag the desired application to the upper part and bring it on the category toolbar. In the opened category list (without dropping the stylus from the icon of the application being dragged) bring it on the desired category (this category must be illuminated from beneath) and release the stylus from the screen of your device. The application will be removed to the category selected. Note: when in the **"All"** category, you'll hardly notice the fact of removing the application to a different category, as the **"All"** category displays all applications.

Edit categories [BACK TO INDEX](#)

To add/delete/edit categories, select **"Edit Categories"** in the list of categories.



You can sort the existing categories in the desired order. To do this, touch the desired category and with the help of the side arrows remove it upwards or downwards. To create a new category, press the **"New"** button. To edit/delete, you should select a category and then press the **"Edit"** button.

Edit Categories		
Icon	Name	Type
	All System	

Edit Category	
Name:	Utilities
Type:	▼ Normal
Icon:	<input type="checkbox"/>
<input type="button" value="OK"/> <input type="button" value="Cancel"/> <input type="button" value="Delete"/>	

MegaLauncher enables you to work with 3 types of categories:

- Normal
- Hidden
- Private

The "Normal" categories are the ordinary categories.

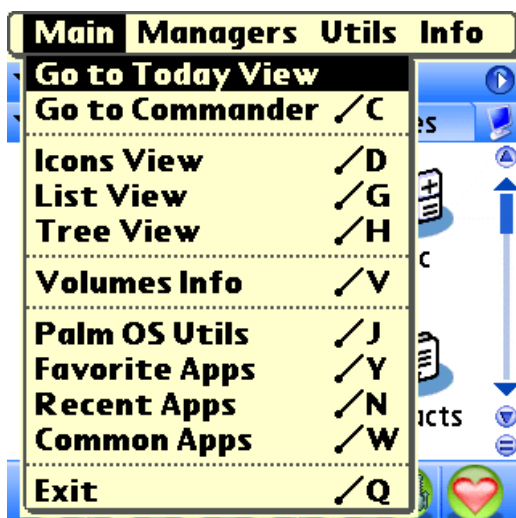
It is clear that if the category is of the "Hidden" type, it won't be visible.

Please pay your special attention to the "Private" categories. To enter the "Private" type of categories, the password is required. No one can enter these categories without knowing the password.

So, you can give the "Private" type to any categories (except "All" and "Unfilled"), but the access to these categories won't be protected unless you activate the "Protection's active" option. To do this, you should press any of the drop down lists on the upper toolbar and select "Menu", then select "Utils" and "Access password". Select the "Protection's active" option. Enter the password in the window appeared and its approval.

Note! The password should be copied and kept in the safe place. Remember that in the case of the password loss, you'll have to perform "Hard Reset" of your device and our technical support team won't be able to help you.

Launcher Menu - "Main" [BACK TO INDEX](#)



Go to Today View - transfer from Launcher to Today.

Go to Commander - transfer from Launcher to Commander.

Icon View - the "Icon View" opening.

List View - the "List View" opening.

Tree View - the "Tree View" opening.

Volume Info - transfer to the mode of the system information display over the device and the external cards.

Palm OS Utils - the list of your favorable applications that can be edited (add/delete/sort). There are 2 ways of replacing an application to the "Palm OS Utils"

1. By means of the built-in "Drag-and-Drop" function drag the desired application onto the "Palm OS Utils" icon on the MegaLauncher lower toolbar.

2. Directly in the "Edit Palm OS Utils" window. To perform this operation, press the "Add" button and in the list appeared select the desired applications (6 maximum).

To delete the application from this list, select the application and press the "Delete" button.

Favorite Apps - the list of your favorite applications that can be edited (add/delete/sort). There are 2 ways of replacing an application to the "Favorites List".

1. By means of the built-in "Drag-and-Drop" function drag the desired application onto the "Favorites List" icon on the MegaLauncher lower toolbar.

2. Directly in the "Edit Favorites List" window. To perform this operation, press the "Add" button and in the list appeared select the desired applications (10 maximum).

A favorite application can be moved up and down the list by means of the side arrows.

To delete the favorite application, select this application and press the "Delete" button.

Recent Apps - latest run applications.

Common Apps - more frequently used applications.

Exit - exit from MegaLauncher.

Launcher Menu - "Managers" [BACK TO INDEX](#)



Music Manager ?enables playing the following sound formats on your device: MP3, OGG, WAV, MIDI. Note! At least one of the applications listed should be installed on your device: MMPlayer, Pocket Tunes or AeroPlayer.

Image Manager ?enables viewing the following graphical formats on your device: JPEG, GIF, BMP. You can apply 2 types of graphical files displaying on your screen. "List" ?enables you to display all available graphical formats by list. "Gallery" ?enables you to display diminished sizes of the originals on the screen. Note! When first launching in the "Gallery" mode, some time is required to create cache images, which is necessary to considerably fasten the process when launching data next time.

Reader Manager ?enables reading the following formats on your device: Palm Doc, Memos, and TXT. There are 2 variants of these formats selection. In the "Manual" mode, searching for the desired read formats is performed manually. In the "Auto" mode, the entire volume is scanned displaying all available formats on the screen. Therefore, this process can take some time due to the number of files and the external card capacity.

FTP Manager - enables connection to FTP servers, previewing the directories content, files downloading from and uploading to the server.

Network Manager - enables the location of communications systems connecting two or more computers (LAN/WLAN), as well as preview of the shared directories content, download files to these directories.

Backup Manager - transfer to the "Backup Manager" utility.

Trash Manager - transfer to the "Trash Manager" utility.

Archive Manager - transfer to the "Archive Manager" utility.

Launcher Menu - "Utils" [BACK TO INDEX](#)



Preferences - this window includes all MegaLauncher necessary adjustments.

Themes - transfer to the utility to change skins/icons/backgrounds.

Interface - manager that enables to adjust the MegaLauncher program appearance.

Colors - different color schemes adjustment.

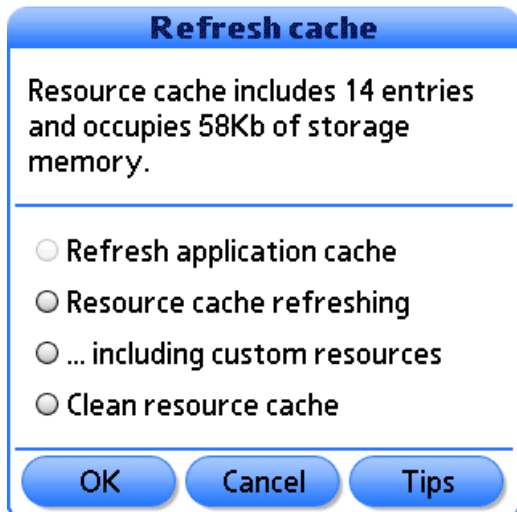
Sounds - sound effects under different operations and actions.

Today View Settings - plug-in activation and adjustment window

Access password - transfer to the window to enter and activate/deactivate the system password.

Language - transfer to the window to change the interface language.

Refresh cache - this function means for manual cache refreshing aimed to actualize the current information on files and applications.



MegaLauncher has two types of cache - Application Cache and Resource Cache.

Application Cache ?stores the list of the installed applications and prevents continual refreshing of the application list. It is controlled from **Utils/Preferences/Application Cache**. This cache is automatically refreshed when getting to **Commander** mode.

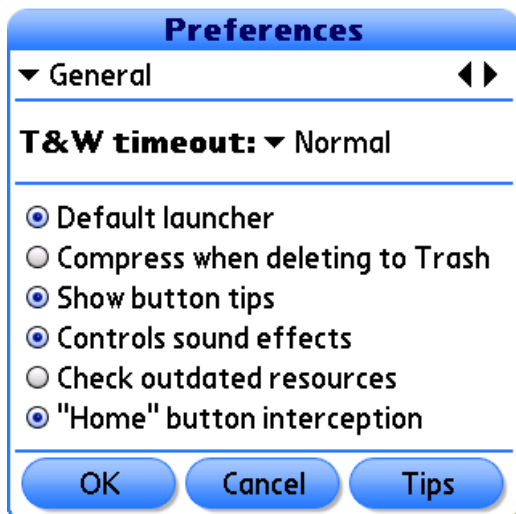
Resource Cache ?stores the resources of the installed applications (icons and names). It is required to prevent continual acquisition of this data from applications, at the expense of which the whole operation with MegaLauncher is speeded up.

Refresh application cache - Application list refreshing

Resource cache refreshing - Application icons and names are stored in a special cache. This data can be refreshed.

... **including custom resources** - When refreshing resource cache, also refresh resources installed by you (e.g. when replacing an application icon). This is useless without the previous option.

Clean resource cache - Scanning of applications on all your PDA media and deletion of the entries about null applications from cache. Can make for some free storage memory.



Touch&Wait timeout - Pause adjustment before the popup menu appears while "Touch&Wait".

Default launcher - Default launcher.

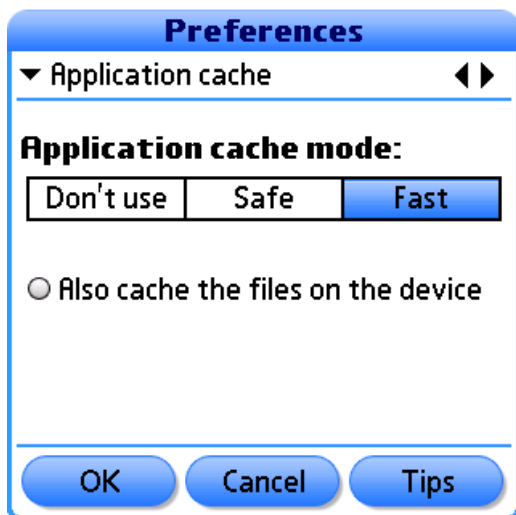
Compress at deletion into Trash - this function makes it possible to automatically compress files/application when deleting them into Trash.

Show button tips - this function enables you to see the floating tips when touching specific interface controls.

Controls sound effects - this function makes it possible to produce the sound effect while manipulating with the interface buttons.

Check outdated resources - When activating this option, every time after getting to **Theme Manager**, both the external card and the device will be scanned for old resources availability, with the following proposition to delete these resources. This is necessary to clean useless information from your card and device.

"Home" button interception - This option is meant for the "Home" hardware button interception on those devices, which have it (LifeDrive, TX). Applicable only together with "Default launcher" option. This option on Treo 700p/Treo 680 operates with some restrictions. This is due to Palm OS realization peculiarities on this particular device.



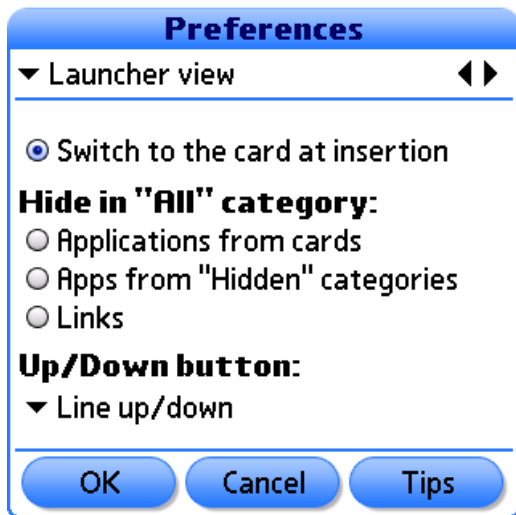
Application cache mode - enables you to activate the caching mechanism and select various caching modes.

Don't use - cache is off.

The "Safe" mode - means for safe operation with applications. In this mode, before performing some of the commands there will be a cache updating necessity alert.

The "Fast" mode - serves for fast operation with applications.

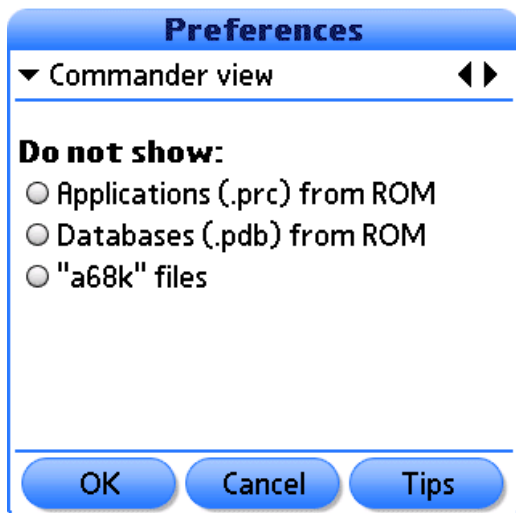
Also cache the files on the device - Caching will be applied including the main PDA memory content. It slightly affects speed.



Switch to the card at insertion - Enables you to switch automatically to the inserted external card display.

Hide "All" category - This enables you not to display several types of applications in ALL category.

Up/Down button - enables using the 上 and 下 hard buttons to scroll the information on the screen line-by-line or page-by-page.



To visually hide some files displaying on the screen, set the checkboxes in the desired positions.

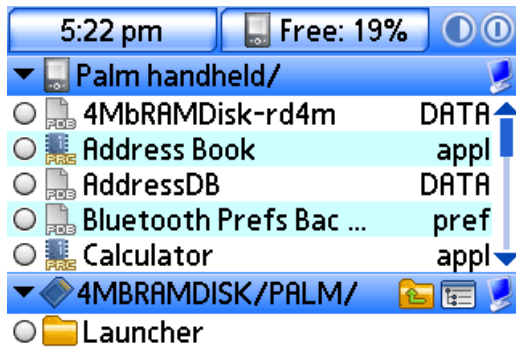
Launcher Menu - "Info" [BACK TO INDEX](#)



Registration - MegaLauncher is regarded as a 14-day working program. After that, if you make up your mind to purchase this program, you'll be sent a registration code via E-Mail. Enter the code into this window to lift the temporary work restriction. Otherwise the program will be blocked and non-working.

About - the information about this program developers.

Commander [BACK TO INDEX](#)



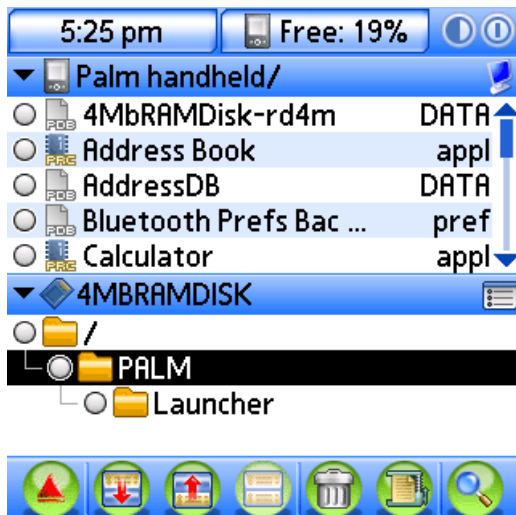
2 upper toolbars of Commander are identical to those of Launcher. The difference is that instead of the categories changing you can select the displaying of the device internal memory or the external card. Commander is able to display simultaneously the internal memory content and the external card. Moreover you can adjust the size of each window. To do this, touch with the stylus the middle toolbar displayed in the picture:



and drag the toolbar upward or downward. Sound effects indicate that the window has been enlarged/diminished to the extremes available.

Note! The window adjustment is possible on the devices with 320*480 resolution only. The window size is stipulated on the devices with 160*160 and 320*320 resolution.

Also it is necessary to take into account that when touching the central part of this toolbar, "Folders tree" will open. The second pressing in the center of this toolbar will result in the normal display view. "Folders tree" can be opened only in case if the external card display is selected in the toolbar.



Bottom toolbar [BACK TO INDEX](#)



The Bottom toolbar contains the icons for display view switching and for the most frequently used utilities. Accordingly from left to right:

- Go to Launcher/Commander/Today

- Upper panel
- Both panels
- Trash Manager
- Archive Manager
- Search Manager

Operations with files and applications [BACK TO INDEX](#)

Realization of all operations in Commander is identical to that in Launcher, i.e. you can use the "**Touch-And-Wait**" and "**Drag-And-Drop**" functions.

Besides, group operations are possible in Commander. To do this, you should select checkboxes of several files/applications (checkboxes are on the left of each file/application) and use the already known "**Touch-And-Wait**" and "**Drag-And-Drop**" functions. In this case the realized operation will be applicable to the group of the selected files/applications.

Hint: to make copying/removing more convenient, use the "Both panels" mode and just drag files from one window to another.

Commander Menu - "Main" [BACK TO INDEX](#)



Go to Today View - transfer from Commander to Today.

Go to Launcher - transfer from Commander to Launcher.

Select All - select all files/applications in the current folder.

Unselect All - cancellation of the selected files/applications in the current folder.

Volumes Info - transfer to the mode of the system information display over the device and the external cards.

Volumes Label - renaming of all volumes available.

Volumes Format - formatting of all volumes available.

Create Folder - folder creation in the previously selected place.

Exit - exit from Commander.

All the rest points of "Commander Menu" are similar to those of "Launcher Menu", but for the "Search Manager" presence.

Search Manager [BACK TO INDEX](#)

Search Manager

Name:

Rule: ▼ Contains...

Type: ▼ Any file

☐

☐

☐

☐

Please enter the search parameters and press the "Search" button

Search

Done

1. Enter the file name or the part of the file name.
2. Select the rule and the file format.
3. Select the place of the file search.
4. Press the "Search" button.

Today [BACK TO INDEX](#)

4.20V

N/A

Saturday, February 10, 2... 2:52 pm

100%

84%

92%

99%

0%

2:00 pm • Tea break

6:00 pm • Meeting

9:00 pm • TV serial

9:00 pm • TV serial 2/11/07

9:00 pm • TV serial 2/12/07

☐ • 1 • Credit payment

☐ • 1 • Fix back door N/A

☐ • 2 • Check car filter N/A

VersaMail has not been set up

This view is plug-in displaying based. Megalauncher uses a number of built-in plug-ins (the amount of which will be increased in due course).

In order to activate the built-in plug-ins, as well as their adjustments and arrangements, you should use **Menu/Utils/Today View Settings**.

Free usage of MegaLauncher is limited by 14 days.

If you want to buy it address to:
<http://www.mobihand.com>