

# JPGview for PalmOS®

User Manual Version 2.5

## Table of contents

1.	INTRODUCTION .....	2
2.	HARDWARE REQUIREMENTS .....	2
3.	INSTALLATION .....	2
4.	SHAREWARE LIMITATIONS / REGISTRATION WINDOW.....	3
5.	MAIN DIRECTORY VIEW .....	4
6.	PREFERENCES.....	5
7.	VIEW JPGS.....	6
8.	COPY JPGS .....	7
9.	DELETE JPGS.....	8
10.	RESAMPLE JPGS .....	8
11.	JPG FILE INFORMATION .....	9
12.	USE THE DATABASE .....	10
13.	THE HANDERA 330 .....	11
14.	VERSION HISTORY .....	13
15.	SHAREWARE REGISTRATION .....	14
16.	CONTACT .....	15
17.	COPYRIGHT NOTICE.....	15

## 1. Introduction

JPGview enables you to **view JPG Image** files stored on a Compact Flash Card with your TRGpro or HandEra 330.

You can use it either to simply view and modify your images made by a Digital Camera, or just store and view Images without using the internal Memory of your Handheld device.

A great advantage of JPG files is the high compression level. You can store more than 260 images in an acceptable quality with a resolution of 160x160 pixels on a small 4MB CF card!

If you are using Multimap together with the TRGpro plugin, you will like the feature to **copy files** into another directory or **change the resolution and compression rate** of a JPG.

Now you can send handy pictures from your vacation to your friends or update a web-page online with a cell phone.

In addition JPGview is able to **read the extended header** of JPGs coming from a digital camera. It shows data like aperture, exposure, EV compensation,.... Most of the actual Digicams store also a **thumbnail** picture as a part of the header (160x120 pixels). JPGview is able to use this thumbnail for a quick preview.

## 2. Hardware Requirements

To use JPGview you need to have a TRGpro®, HandEra 330®, Sony Clié® or a Palm 5xx® device.  
VFS is now supported.

## 3. Installation

Simply use *PalmPilot Install Tool* to install the 'JPGview.prc' file onto your pilot and do a HotSync.

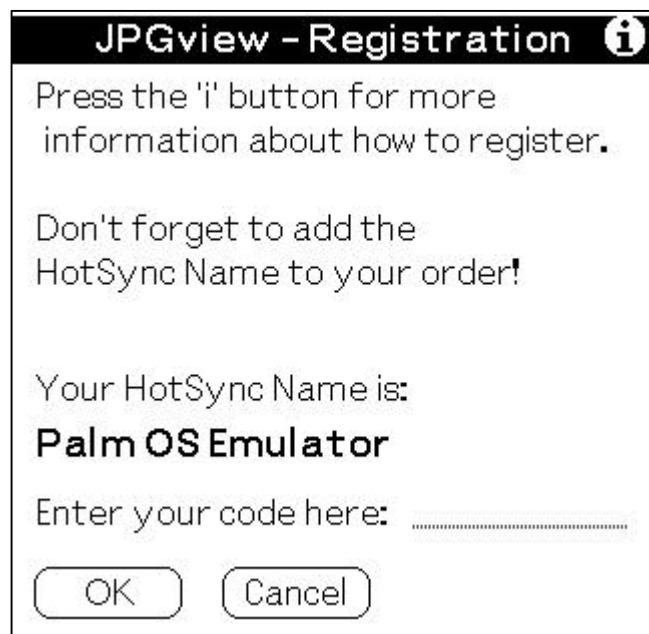
**NOTE:** Don't run JPGview from a CF card with AutoCF. Only from the internal Memory!

#### 4. Shareware limitations / Registration window

There is no functional limitation for the unregistered version. You will only get a reminder message every time you try to view or convert a picture.

In addition PlamJPG does not store the 'Use Thumbnail...' flag. So you have to set it every time you enter the application ☺.


Registering JPGview will support the development of future enhancements and is good for all future releases. See also *Shareware registration* on page 14.

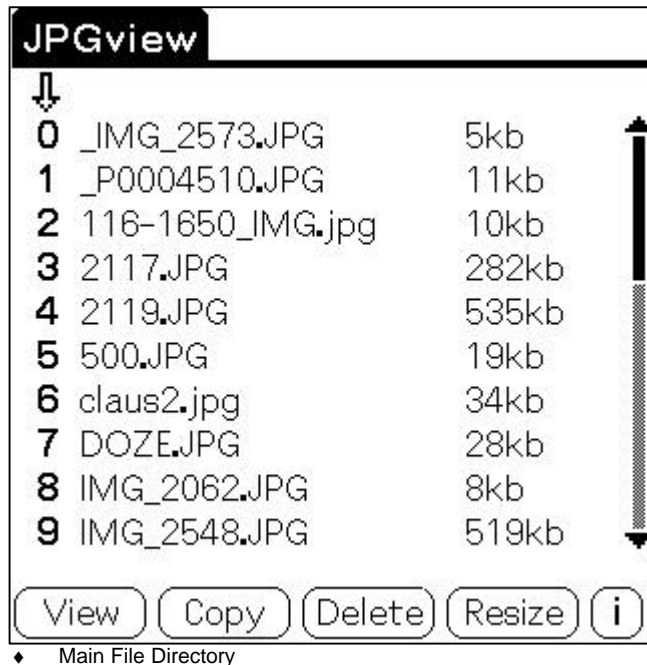


◆ Registration / About dialog






Press  for 'about' and copyright information on JPGview.


## 5. Main Directory View

Start the application by choosing the  icon from the Palm launcher. You will see a table which shows all the JPGs and subdirectories of the CF card inserted. All other file types do not appear on this list.



Usage:

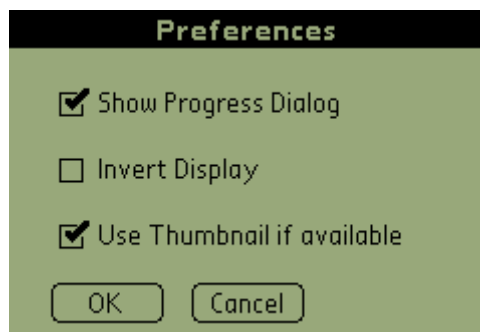
- Change into a subdirectory by selecting its name  

- To go back to the upper directory select the '..' entry in the list  

- Refresh directory contents or flush the image cache by selecting '.'  

- To mark a JPG for usage, just select it  

- An image that was already loaded into the memory is marked with an ✓  


To scroll in the file list use the Scroll Bar on the right or use the UP/DOWN keys 

You can change the sort order of the filenames by selecting the symbol in the upper right corner:



## 6. Preferences



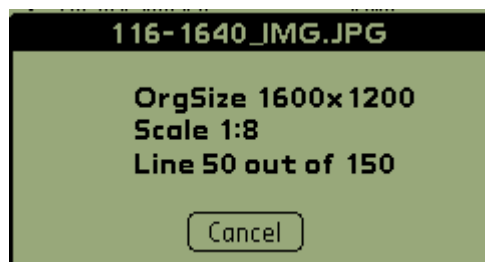
- |                            |   |  |
|----------------------------|---|--|
| Show Progress Dialog       | - | shows the progress during a conversion   |
| Invert Display             | - | Picture is inverted; useful for backlight turned on  |
| Use thumbnail if available | - | JPGview is able to read a JPG thumbnail picture that could be part of the JPG header. Most digital cameras write such a header. Usually the thumb has a resolution of 160x120 pixels. JPGview uses this thumbnail instead of the main picture if this flag is set.<br>The conversion will be about 10 times faster!! |

**NOTE:** The image quality is better if JPGview uses the main picture.  
Not every type of thumbnail header is supported (right now).

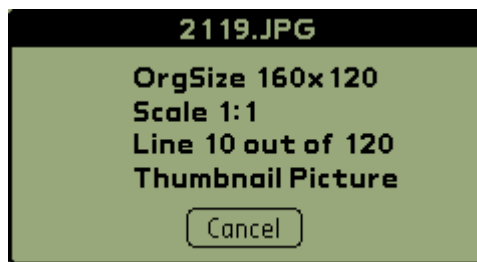
## 7. View JPGs

To view a JPG select it from the list and press the  button.

A dialog appears to inform you about the conversion progress:



◆ Conversion Progress



Conversion if JPGview uses the thumbnail pic

You can abort the conversion at any time. The scaling factor is determined automatically by the application.

Once the conversion is completed you will see the image:



◆ Image View

To return to the file window tap once into the picture.

To move an image tap into it, hold the stylus down and move the picture:



♦ Moving images if they do not fit onto the screen

When an image is loaded it is still in the internal memory even if you are back in the file window (image cache).

How many picture are stored in the cache depends on the image size and the amount of memory available. Normally the cache can hold ~5 pictures.

The application cleans up the cache when:

- the directory contents are refreshed (change the directory, switch to another window like the file info and back, ..)
- there is not enough memory available for the next action



When the image is shown you can jump to the next or previous picture by using the UP/DOWN key.

## 8. Copy JPGs

Select **Copy** in the main file view to copy a JPG into another directory. A dialog comes up to let you select the destination:



♦ Select destination for copy

It is possible to change the destination file name in the upper input line.

Select the destination directory in the lower list box the same way as in the main file window and press **OK** to copy the file.

## 9. Delete JPGs

To delete a JPG select it and press **Delete** in the main file window.  
You need to confirm this action in the following dialog.

## 10. Resample JPGs

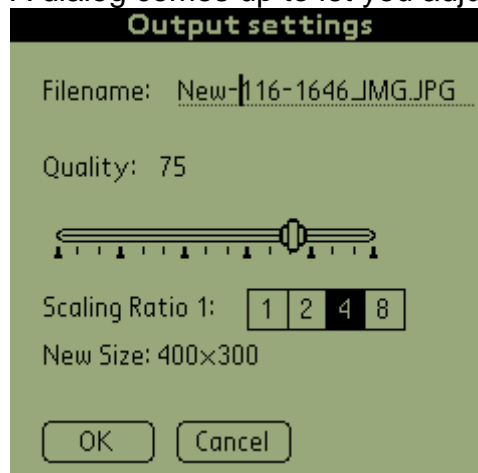
A nice function of JPGview is to write rescaled images back to the CF card. This might be useful if you want to send images with your cell phone or modem and do not want to transmit several hundreds of kilobytes.

In addition you are able to set the compression rate of the new JPG between 1 and 100. 100 means better quality and larger files. The most reasonable setting for this is between 65 and 85.

You can scale the image by setting the scale factor to 1:1, 1:2, 1:4 and 1:8 related to the original size.

Select **Resize** from the main file window.

A dialog comes up to let you adjust the settings described above:



◆ Output settings


In this dialog you also change the destination file name. The default name is the original one with a leading '\_'.  
Press **OK** to start the conversion procedure.

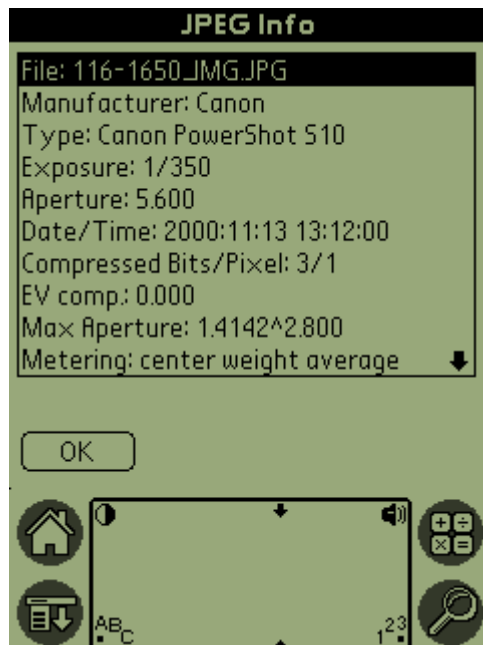
**NOTE:** A already existing file with the same name will be overwritten!  
The modified JPG has the same color depth as the original one!



## 11. JPG File Information

Most of the actual digital cameras write a special file header with information about the camera settings with which the photo was taken.

Select  to take a look at this information.



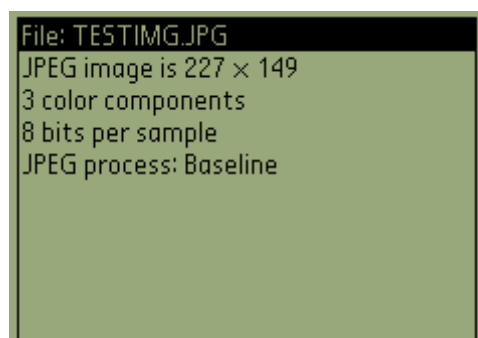
◆ Extended JPEG file info

JPGview is currently able to analyze the following contents:

- Manufacturer
- Camera Type
- Firmware version
- Exposure time
- Aperture
- Exposure Mode
- ISO speed
- Date/Time
- Compression in Bits per Pixel (rough estimate)
- EV compensation
- Exposure metering method
- Light source, actually this means white balance setting.
- Flash
- Focal length of lens used to take image. Unit is millimeter.

**Note:** Not every field is filled by every camera!

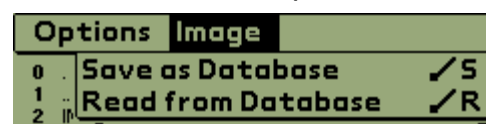
You can also use the file info with any other JPG file. But you will see only the general informations:



♦ Regular file info

## 12. Use The Database

In future versions its planed to write FireViewer<sup>(tm)</sup> compatible images as a palm database. A first step into this direction are the menu items:



Right now you can save only one (your favorite) picture as a palm database. To do so view the picture so that it is in the image cache and select *Save as Database* from the menu.  
Now you can load the image independent from the inserted CF card at any time.

### 13. The HandEra 330®

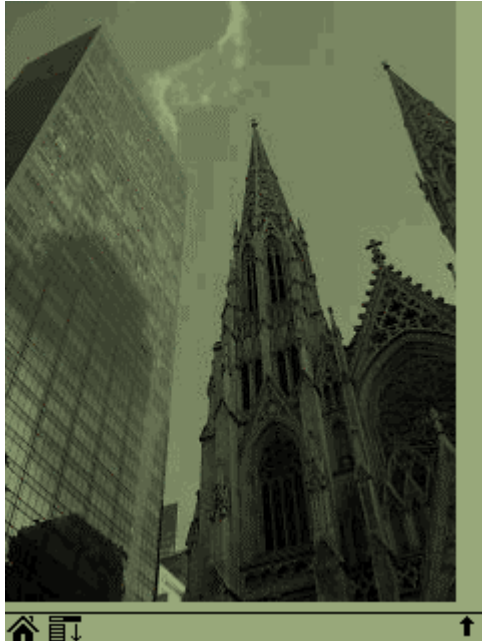
Some features are only available on the HandEra 330 device.

**NOTE:** The HandEra 330 support is in the early beta phase. So there is no guarantee for 100% functionality!

JPGview is already able to use the higher resolution of the HandEra.

#### Full screen view

Full screen view is used automatically when a picture is shown.

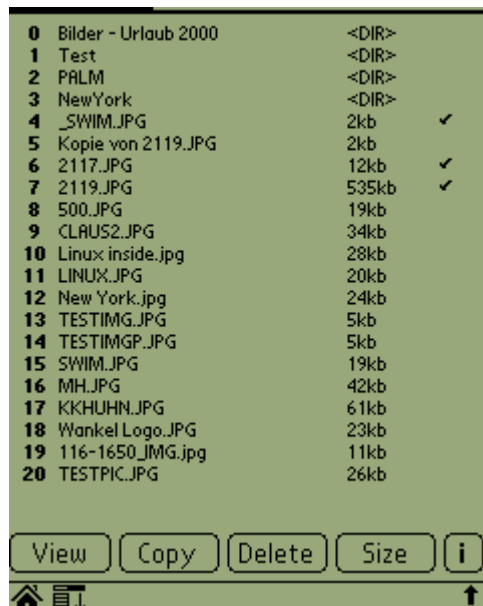


## Landscape mode

The Application switches automatically to the landscape mode if the image is also in a landscape format and it is larger than the screen



## Minimize the silk screen in the file window



## 14. Version History

- |               |   |
|---------------|---|
| Version: 2.1  | 21 June, 01 <ul style="list-style-type: none"><li>• Bug fix with long filenames in the file info window</li><li>• Adjustable sort order of filenames</li><li>• Some Handera improvements</li></ul>  |
| Version: 2.01 | 9 June, 01<br>2 <sup>nd</sup> Official release <ul style="list-style-type: none"><li>• Small bug fixes</li><li>• Using JPG thumbnails</li></ul>   |
| Version: 2.0b | 1 June, 01<br>2 <sup>nd</sup> Unofficial beta release <ul style="list-style-type: none"><li>• Enhanced File information for Digicanms</li><li>• Write rescaled pics back to the CF card</li><li>• Image cache</li><li>• New file list</li><li>• And many other things....</li></ul>                                       |
| Version: 1.0  | 10 May, 01<br>1 <sup>st</sup> Official release <ul style="list-style-type: none"><li>• View JPG files in any Path of the CF</li><li>• Automatic scaling</li><li>• Standard and progressive JPG's</li><li>• Inverted view (e.g. for Backlight)</li><li>• Copy JPG's to any path of the CF</li><li>• Delete JPG's</li></ul> |

## 15. Shareware Registration

Since it is a lot of work to develop an application like this I decided to make it shareware.

This will guarantee future development. The registration fee is only 12US\$.

Registered users will automatically receive future version without any extra costs!

To register please go to:

**[www.pdassi.de/product.php?prod\\_id=343](http://www.pdassi.de/product.php?prod_id=343)**

or at PalmGear:

**<http://store.yahoo.com/pilotgears/clausfenske.html>**

PalmGear Phone order: 817.640.6558

PalmGear Fax order: 817.640.6614

or if you are in Germany send me an Email to pay by bank transfer.

Once registered, all nag screens will be gone and JPGview will remember the Thumbnail setting in the preferences...

## **16. Contact**

If you discover new bugs, have ideas for future versions or just comments please contact me by e-mail at:

[mail@claus-fenske.de](mailto:mail@claus-fenske.de)

Claus Fenske  
Düsseldorf / Germany  
<http://www.claus-fenske.de>

## **17. Copyright Notice**

Copyright(c) 2001, Claus Fenske. All Rights Reserved.

The author assumes no responsibility for any damage or loss resulting from the use or misuse of this software.

Special thanks to everyone who gave me support to develop this application or just wrote useful comments!

And some very special thanks to:  
Michael Walton, Ken Zemach, Thomas Lienhard, ....