



Customizing Palm Resources with RsrcEdit

31 October 2003



Index

Why customize resources of existing programs?	2
Getting RsrcEdit	3
A practical case: customizing RsrcEdit's main form	3
Conclusion	6





Why customize resources of existing programs?

Let's take a practical example to explain why customizing the resources of an existing Palm program can be useful sometimes.

As we are going to deal with RsrcEdit in this paper, I will take RsrcEdit as an example ☺

Here is the main screen of RsrcEdit:



We can see that we highlighted a file of device among the whole list of files. We do not get the full name of this file in the list area on the left, we only know that it starts with **Palm OS Data_**. The name is also given, for eventual modification in the top right field. But, as the name is very long, we only get to know that it starts with **Palm OS**. And, even worse, we can believe that this is the full name, when it has been truncated!

This is not very practical, so we will modify this form layout to get a chance to see the full name of this file, like this:



Now, we know the real full name of this file, it is **Palm OS Data_enUS**. This is much nicer, isn't it? I am pretty sure that you are convinced! So, we will study how to make this by ourselves ☺



Getting RsrcEdit

RsrcEdit is one of the MUST HAVE tools for developers and other Palm maniacs.

RsrcEdit was developed in its time by IndiVideo, then taken over by Quartus. It has always been shareware, except for the short time IndiVideo was stopping its business and just before Quartus overtook it.

I was lucky enough to get my free copy from IndiVideo at that time ☺

No need to upgrade as RsrcEdit has not changed of version since then (Quartus did not provide any upgraded version at all!).

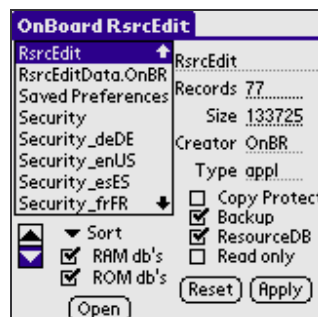
You will find RsrcEdit here: <http://www.quartus.net/products/rsrcredit/> and it is up to you to decide if you want to buy it (price is \$15) or not (this software is really an essential one with no competitor at all in its area).

I will not get too much in the details of how to use RsrcEdit here.

Please read the documentation shipped with RsrcEdit for understanding how to use it.

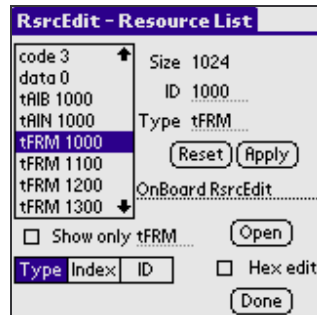
A practical case: customizing RsrcEdit's main form

Once you have downloaded and installed RsrcEdit, you just have to launch RsrcEdit and find the RsrcEdit program:

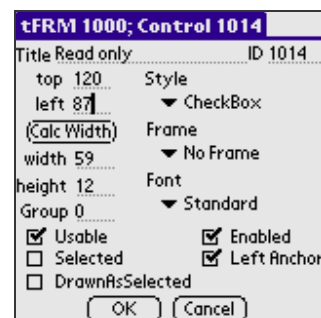
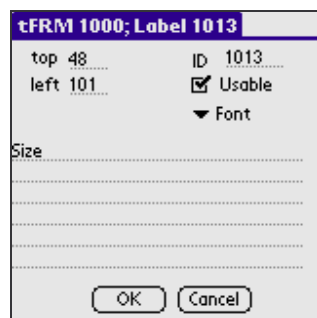
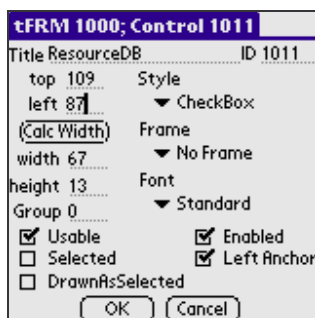
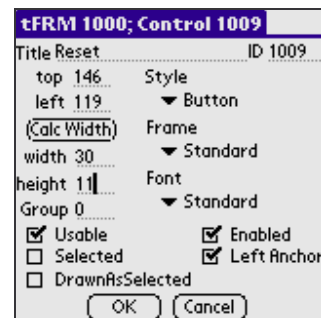
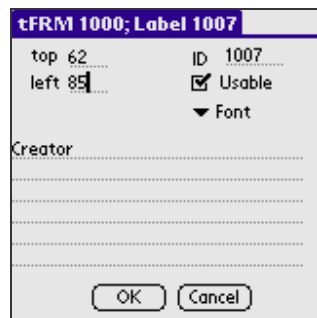
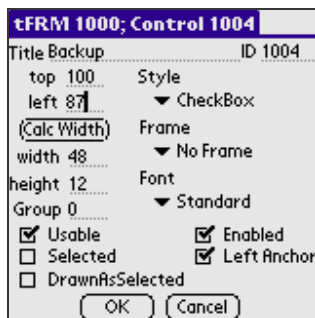
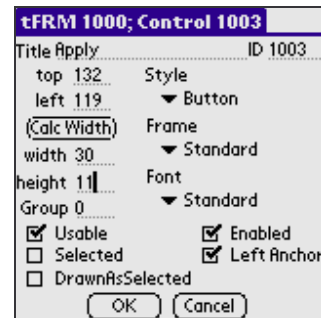
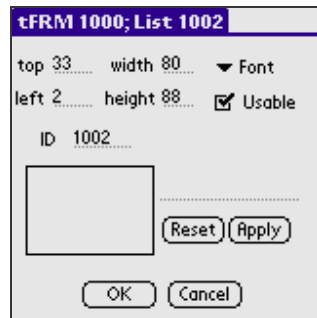
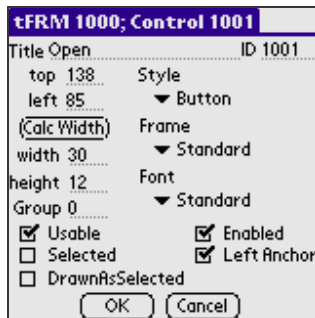




Let's just click on the Open button and search for the **tFRM 1000** resource:



Again, we click on the Open button. And from there on, we will modify different resources like shown in the following screenshots:





tFRM 1000; Control 1015

Title Sort ID 1015

top 123 Style

left 20 PopupTrigger

(Calc Width) Frame

width 35 No Frame

height 12 Font

Group 0 Standard

Usable Enabled

Selected Left Anchor

DrawnAsSelected

OK Cancel

tFRM 1000; Label 1017

top 34 ID 1017

left 85 Usable

Font

Records

OK Cancel

tFRM 1000; Field 1018

top 20 width 147 ID 1018

left 2 height 12

Editable AutoShift

Usable Single Line

Dynamic ScrollBar

Underline Alignment

Numeric Font

Max Chars 80

OK Cancel

tFRM 1000; Control 1019

Title Copy Protect ID 1019

top 90 Style

left 87 CheckBox

(Calc Width) Frame

width 73 No Frame

height 12 Font

Group 0 Standard

Usable Enabled

Selected Left Anchor

DrawnAsSelected

OK Cancel

tFRM 1000; Control 1020

Title ID 1020

top 137 Style

left 4 PushButton

(Calc Width) Frame

width 11 Standard

height 10 Font

Group 1 Symbol7

Usable Enabled

Selected Left Anchor

DrawnAsSelected

OK Cancel

tFRM 1000; Control 1021

Title ID 1021

top 126 Style

left 4 PushButton

(Calc Width) Frame

width 11 Standard

height 10 Font

Group 1 Symbol7

Usable Enabled

Selected Left Anchor

DrawnAsSelected

OK Cancel

tFRM 1000; List 1022

top 123 width 65 Font

left 20 height 33 Usable

ID 1022

By Name

By Extension

By Type

By Creator

Reset Apply

OK Cancel

tFRM 1000; Control 1023

Title RAM db's ID 1023

top 136 Style

left 23 CheckBox

(Calc Width) Frame

width 57 No Frame

height 12 Font

Group 0 Standard

Usable Enabled

Selected Left Anchor

DrawnAsSelected

OK Cancel

tFRM 1000; Control 1024

Title ROM db's ID 1024

top 147 Style

left 23 CheckBox

(Calc Width) Frame

width 59 No Frame

height 12 Font

Group 0 Standard

Usable Enabled

Selected Left Anchor

DrawnAsSelected

OK Cancel

Well, we should be all set now. So, we will go back to the main form or RsrcEdit:

OnBoard RsrcEdit

RsrcEdit

RsrcEdit Records 77

RsrcEditData.OnBR Size 133725

Saved Preferences Creator OnBR

Security Type appl

Security_deDE Copy Protect

Security_enUS Backup

Security_esES ResourceDB

Security_frFR Read only

Sort

RAM db's

ROM db's

Open Apply

Reset

Wonderful, we could so easily modify RsrcEdit's main form using RsrcEdit ☺



Conclusion

The best of what we did is that everything was made ON BOARD your own device!

And this way of doing might give you some brilliant ideas like the following one:



Have fun customizing Palm resources on your device 😊