

# *Veo*

## ***Photo Traveler 130S***

*Handheld Camera*



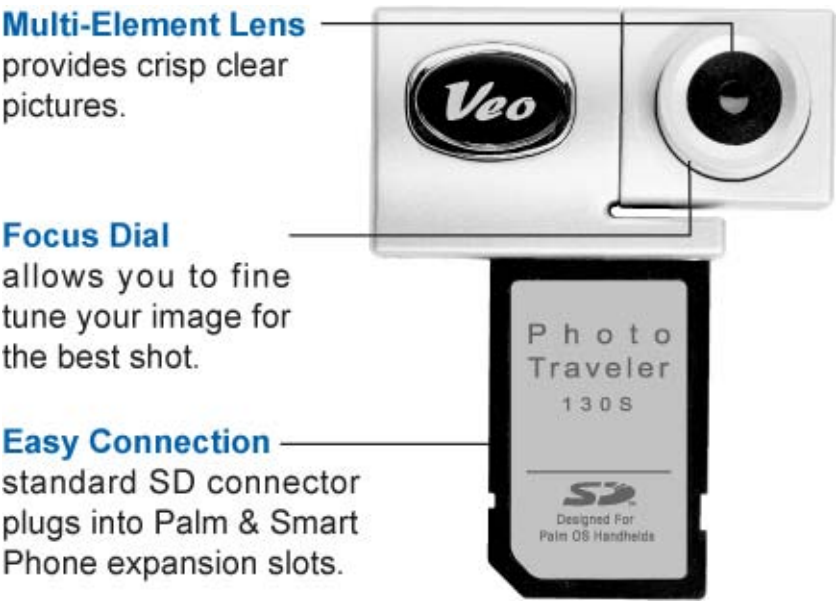
## **Quick Start Guide**

*For evaluation only*

Quick Start Guide Information	
Date	12/11/2003
Document Revision	06/01/2004
Distribution	Evaluation only - No technical support is provided for this software

WELCOME

Thank you for purchasing the Veo Photo Traveler 130S. This Quick Start Guide has been created for Palm™ users who currently own the Photo Traveler 130S for Pocket PC™. Due to unforeseen circumstances, we cannot offer a Palm version of the Photo Traveler 130S at this time.



Before using the camera on your Palm handheld, please ensure that your system meets the minimum system requirements listed below.

Minimum System Requirements	
Operating Systems	Microsoft® Windows® 98, Me, 2000, XP
Palm™ Handhelds	Tungsten™ T, T2, T3, C (No other models are supported)
Palm OS®	5.0 or higher

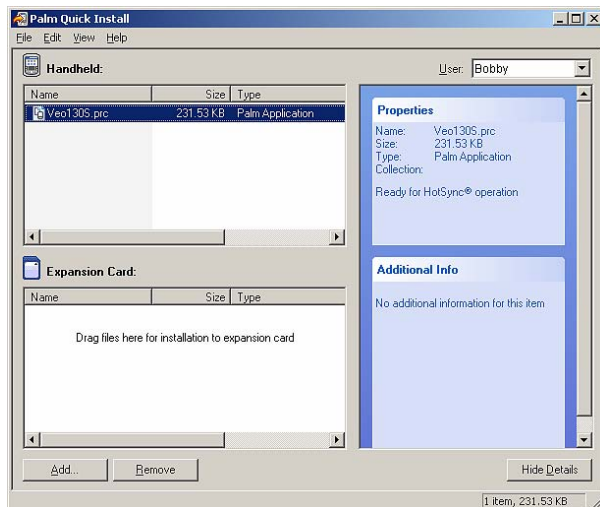
## SOFTWARE INSTALLATION

1) Double-click on the Setup.exe program to install the Veo conduit on your computer. The conduit will allow you to transfer your pictures taken on your Palm handheld to your PC.

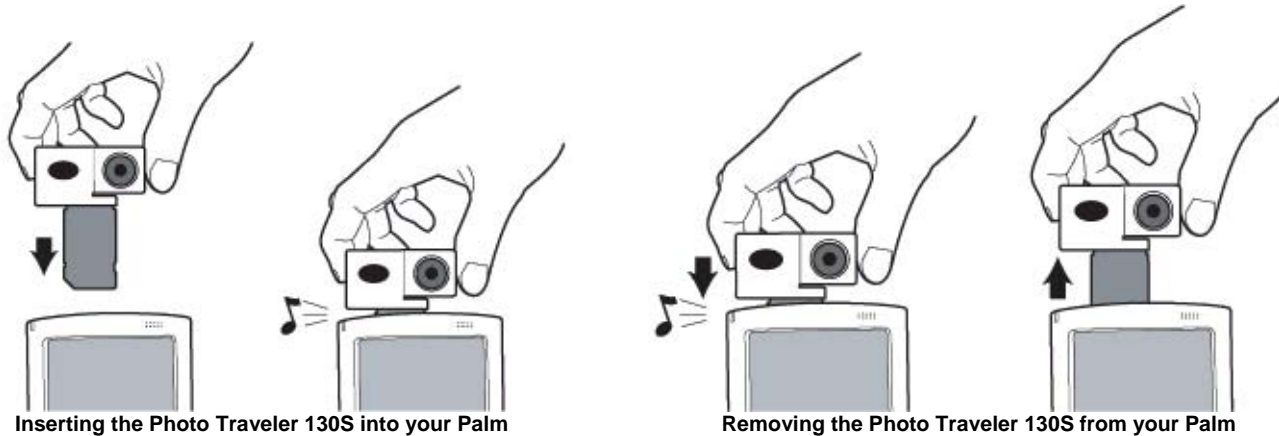


Setup.exe

2) After the Veo Conduit is installed, start the Palm Desktop and install the Veo130S.prc file using the Palm Desktop's Quick Install tool and then perform a HotSync. This will install a program called **Veo 130S** on your Palm handheld.



3) After the Veo 130S is installed, you should perform a soft reset on your Palm and then plug the camera in.



When you plug the camera in, the following message will appear: *“Unrecognized Format. Would you like to format the external device? This will erase ALL data on this device. [OK] [Cancel]”*

4) Tap **[Cancel]** to clear the message. *Note: This message will appear each time you plug your Photo Traveler 130S into the SDIO slot on your handheld. (You can safely ignore this message.)*

5) Locate the Veo 130S icon on your Palm and tap the icon to start the camera.

6) You can now take pictures or record videos using the camera on your Palm.

HOW TO TAKE PICTURES

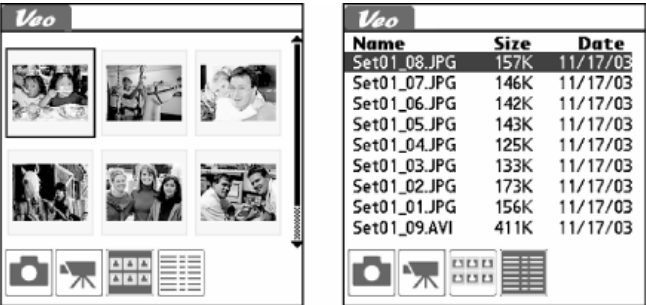
- 1) Use your handheld's screen to frame your subject.
- 2) Adjust the focus until the subject appears sharp. You can also swivel the camera head up to 180°.



- 3) Choose your desired file type by tapping on either the Camera or Video icon.



- 4) Press the center button on your handheld's 5-way navigator to take a picture. If you are recording a video, press the center button to begin recording and press the center button again to stop recording.
- 5) Your picture or video will automatically be saved to the Album. You can review the pictures or videos in the Album in Thumbnail or List modes.



Name	Size	Date
Set01_08.JPG	157K	11/17/03
Set01_07.JPG	146K	11/17/03
Set01_06.JPG	142K	11/17/03
Set01_05.JPG	143K	11/17/03
Set01_04.JPG	125K	11/17/03
Set01_03.JPG	133K	11/17/03
Set01_02.JPG	173K	11/17/03
Set01_01.JPG	156K	11/17/03
Set01_09.AVI	411K	11/17/03

## ***TRANSFERRING PICTURES TO YOUR PC***

- 1) Insert your Palm into the docking cradle or connect it to the HotSync cable.
- 2) Perform a HotSync to transfer the pictures from the Palm to the PC.
- 3) The pictures will be downloaded to: C:\Program Files\Palm\Your username\Palm Device's name\*\Veo 130S.  
  
\*(Your username/Palm Device's name) denotes the username or Palm Device's name that you have assigned to your Palm. For example, if your Palm is called Tungsten\_Bobby, then the folder where the pictures are stored could be found in: C:\Program Files\Palm\Tungsten\_Bobby\Veo 130S.
- 4) To view the pictures, go to the folder where you downloaded the pictures to and double-click on it to view.

### **Copyrights and Trademarks**

HotSync, Palm, the Palm trade dress, and Palm OS are trademarks of PalmSource, Inc. or its affiliates. All other product and brand names may be trademarks or registered trademarks of their respective owners.